



15370 Barranca Parkway  
Irvine, CA 92618-2215  
USA

# **Fargo Workbench Utility User Guide**

Workbench Utility User Guide (Rev 2.1), © 2009 property of HID Global Corporation. All rights reserved.

Exclusive permission is granted to authorized resellers of HID Global products to reproduce and distribute this copyrighted document to authorized HID Global customers, who have signed a no disclosure agreement regarding the restricted, proprietary use of said document.

The revision number for this document will be updated to reflect changes, corrections, updates and enhancements to this document.

<b>Revision Control Number</b>	<b>Date</b>	<b>Document Title</b>
Revision 2.1	February 2010	Workbench Utility User Guide
Revision 2.0	January 2010	Workbench Utility User Guide

### **Trademarks and Disclaimers**

HID, HID Global, and Fargo are the trademarks or registered trademarks of HID Global Corporation in the U.S. and other countries.

The information contained in this document is provided AS IS without any warranty.

HID Global hereby disclaims all warranties and conditions with regard to the information contained herein, including all implied warranties of merchantability, fitness for a particular purpose, title and non-infringement.

In no event shall HID Global be liable, whether in contract, tort or otherwise for any indirect, special or consequential damages arising from the use of the information contained in this document.

Any questions regarding changes, corrections, updates or enhancements to this document should be forwarded to:

Hid Global  
Support Services  
6533 Flying Cloud Drive  
Eden Prairie, MN 55344 (USA)  
(866)607-7339 Ext #6  
FAX: (952) 946-8492  
[www.hidglobal.com](http://www.hidglobal.com)

# Requirements

## System Requirements

- Windows XP SP3, Windows 2003 Server R2 SP2 (32-bit)
- Windows Vista (32-bit or 64-bit)
- 1Ghz computer with 512MB of RAM or higher
- 500 MB free hard disk space or higher

## Supported Printer Models

The following Printer Models are supported by the Workbench Printer Utility:

- DTC550
- HDP600
- HDP600 CR100
- HDP5000
- HDPii
- DTC300
- C30/C30e
- DTC 400/400e
- M30e
- DTC1000
- DTC4000
- DTC4500

## Applet/Printer Support Table

Printers are shown across the top row. Applets are shown in the first column (left side).

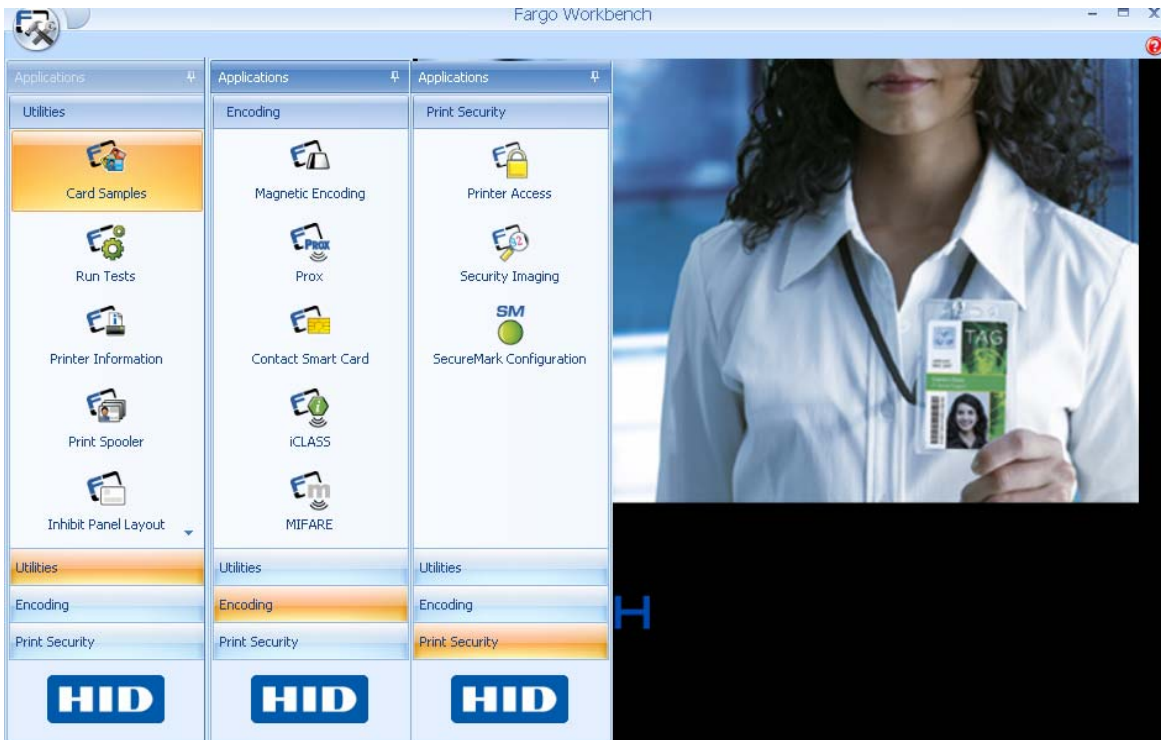
	DTC400/ 400e	DTC300	C30 C30e	M30e	HDP600	HDP600 CR100	HDP5000 HDPii	DTC550	DTC1000	DTC4000	DTC4500
<b>Card Samples</b>	X	X	X	X	X	X	X	X	X	X	X
<b>Run Tests</b>	X	X	X	X	X	X	X	X	X	X	X
<b>Printer Information</b>	X	X	X	X	X	X	X	X	X	X	X
<b>Ribbon Information</b>	X	X	X	X			X	X	X	X	X

<b>Remote LCD</b>	X	X	X	X	X	X	X	X	X	X	X	X
<b>Advanced Settings</b>	X	X	X	X			X	X	X	X	X	X
<b>Sensors</b>							X	X				
<b>Film Information</b>							X					
<b>Print Spooler</b>	X	X	X	X	X	X	X	X	X	X	X	X
<b>Print Viewer</b>	N/A	N/A	N/A	N/A	N/A	N/A	N/A	N/A	N/A	N/A	N/A	N/A
<b>Magnetic Encoding</b>	X	X	X	X	X	X	X	X	X	X	X	X
<b>Proximity Card</b>	X		X		X		X	X		X	X	X
<b>Contact Smart Card</b>	X		X		X		X	X		X	X	X
<b>iCLASS</b>	X		X		X		X	X		X	X	X
<b>MIFARE</b>	X		X		X		X	X		X	X	X
<b>Printer Access</b>	X				X	X	X	X		X	X	X
<b>Security Imaging</b>	X									X	X	X
<b>SecureMark Configuration</b>	X						X	X		X	X	X




## Application Overview





You can access three (3) applet groups in the Workbench Printer Utility. An introductory section is provided to help you learn the basic operations within the application.

- See [Using the Utilities Applet Group](#) , [Using the Encoding Applet Group](#), and [Using the Print Security Applet Group](#).








## Reviewing the Utilities Applet Group

Icon	Applet Description
 Card Samples	<p>This applet provides a set of images that can be sent to the printer using the current driver settings.</p> <p>This applet is used to test the driver settings and printer functionality outside of a customer's badge making application. See <a href="#">Using the Card Samples Applet</a>.</p>
 Run Tests	<p>This applet provides the ability to run utility commands resident in the Printer Firmware to exercise motors and sensors in the printer.</p> <p>You can choose to run Mechanics Test or Self Tests. See <a href="#">Using the Run Tests Applet</a>.</p>
 Printer Information	<p>This applet provides information relating to the printer capabilities and printer supplies information. See <a href="#">Using the Printer Information Applet</a>.</p> <p>Check status of supplies or printer to test Sensor functionality and continue printer operations.</p>




 <p>Print Spooler</p>	<p>This applet provides the ability to send Print Files (PRN's) to the printer. See <a href="#">Using the Print Spooler Applet</a></p> <p>Print multiple copies for samples or troubleshooting.</p>
 <p>Print Viewer</p>	<p>This applet provides the ability to view a Print File (PRN) as an image. See <a href="#">Using the Print Viewer applet</a></p> <p>View to continue proper layout and to see if image defects are part of the file going to the printer.</p>
 <p>Inhibit Panel Layout</p>	<p>This applet provides the ability to configure the layout of the Inhibit panel of a ribbon.</p>
 <p>Rewritable Card Eraser</p>	<p>This applet provides the ability to erase rewriteable cards in a batch or one at a time.</p>

## Reviewing the Technology Card Applet Group

Icon	Applet Description
 <p>Magnetic Encoding</p>	<p>This applet provides the ability to exercise the printer's magnetic encoding functionality independent of an image or application.</p> <p>See <a href="#">Using the Encoding Applet Group</a>.</p>
 <p>Proximity Card</p>	<p>This applet provides the ability to test the Proximity Card Reader in a Printer.</p> <p>See <a href="#">Using the Encoding Applet Group</a>.</p>
 <p>Contact Smart Card</p>	<p>This applet provides the ability to test the Contact Smart Card encoder in a Printer.</p> <p>See <a href="#">Using the Encoding Applet Group</a>.</p>
 <p>iCLASS</p>	<p>This applet provides the ability to test the iCLASS® Encoder in a Printer.</p> <p>See <a href="#">Using the Encoding Applet Group</a>.</p>

 <p>MIFARE</p>	<p>This applet provides the ability to test the MIFARE® Encoder in a Printer.</p> <p>See <a href="#">Using the Encoding Applet Group</a>.</p>
---	---

## Reviewing the Print Security Applet Group

Icon	Applet Description
 <p>Printer Access</p>	<p>This applet provides the ability to enable and configure the Password control feature on the printer.</p> <p>See <a href="#">Using the Printer Access Applet</a> .</p>
 <p>Security Imaging</p>	<p>This applet allows the user to configure the data that is printed with the fluorescent panel of a YMCFKO or YMCFKOK ribbon.</p> <p>See <a href="#">Using the Security Imaging Applet</a></p>
 <p>SecureMark Configuration</p>	<p>This applet allows the user to enable SecureMark on their Printer.</p> <p>See <a href="#">Using the SecureMark Configuration Applet</a>.</p>

## Meeting System Prerequisites

Here are the system prerequisites for the Workbench Printer Utility. These apply to all procedures in this user guide.

- The Workbench Printer Utility has been successfully installed.
- The Printer Driver for the printer to be tested is successfully installed.
- The printer to be tested is connected to your PC.

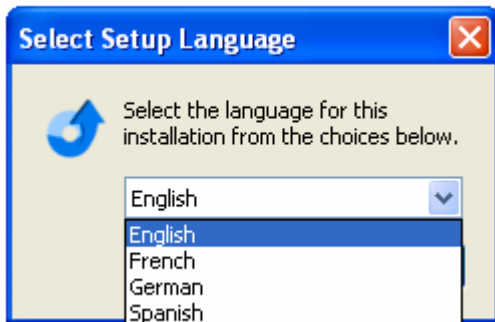
# Standard Procedures for installing the Application

The procedures in this section apply to all applet groups and their respective applets.

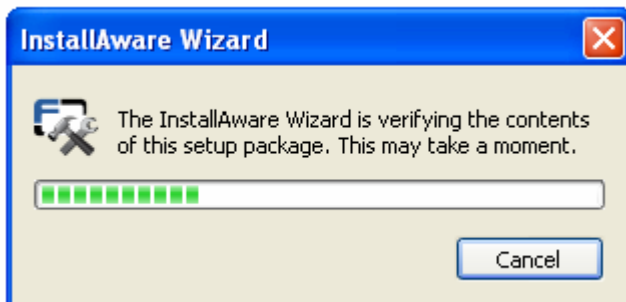
The Workbench is installed from the Printer driver CD. Select that option and follow the install procedure.

The Workbench and current printer Drivers are located on the [www.hidglobal.com](http://www.hidglobal.com) website under that particular printer.

- Select the language from the drop down menu.



Follow the InstallAware Wizard prompts to complete the installation.



## Launching the Application

Click the application shortcut under the folder from the Fargo Start Menu, as shown in Display A. You can also click **Diagnostics** button on the card tab of the Printer Driver instance for the printer to be tested, as shown in Display B.

You will be prompted to select the printer used for the Workbench application. Display A

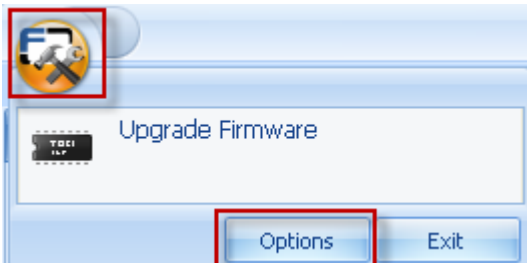


Display A

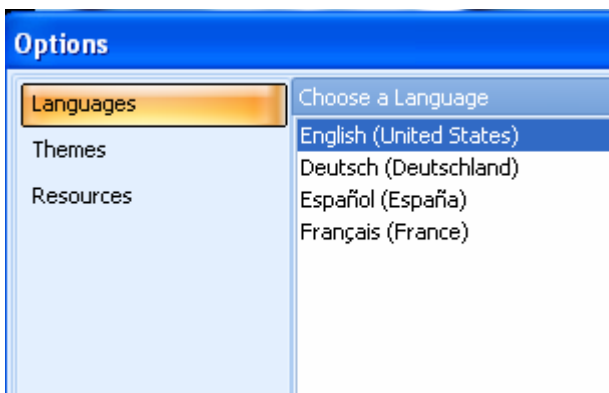


## Viewing the Options dialog

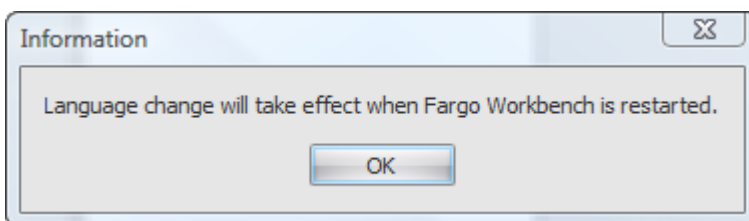
Select the Application button to display the options: Language, Themes, and Resources.



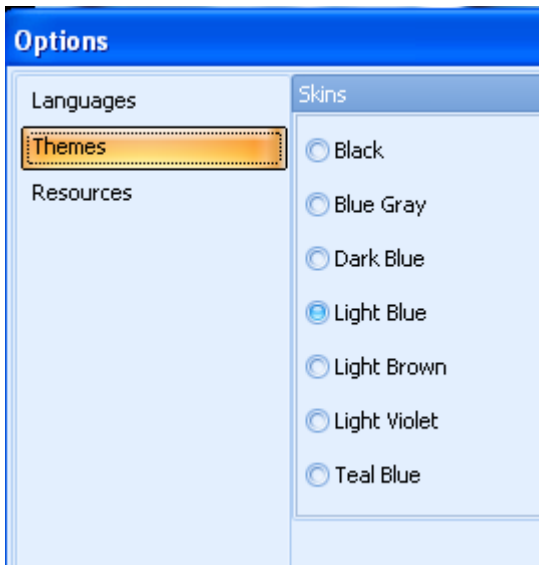
Use the Languages tab to change the displayed language of the software.



Clicking OK tells the user that the displayed language will be changed after the software is restarted



Use the Themes Tab to change the look and feel of the software.

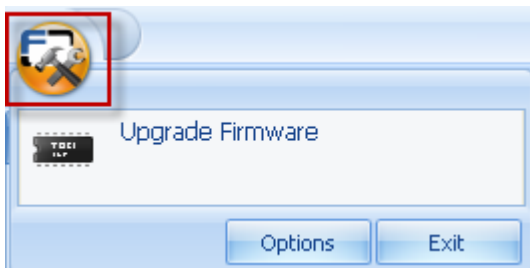


Use the Resources tab to view version information for the Fargo Workbench.

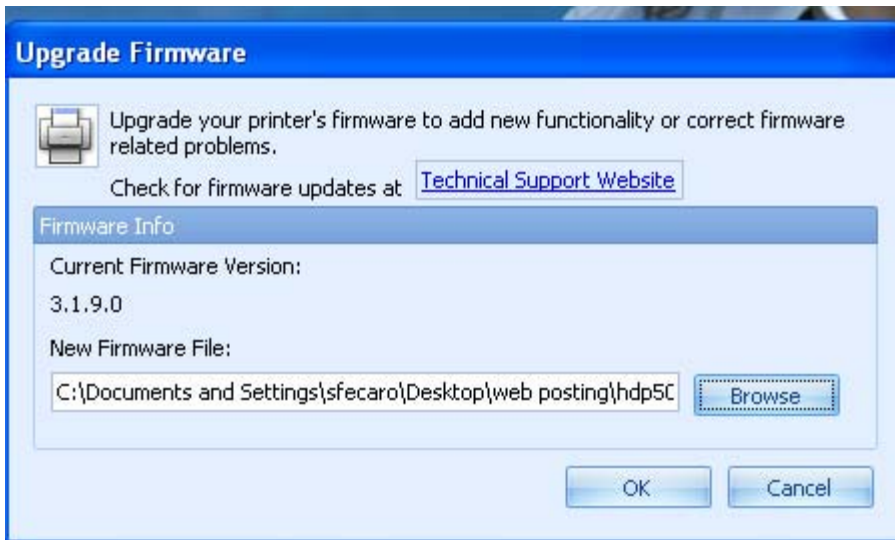


## Upgrading the Printer Firmware

From the Application Icon select Upgrade Firmware

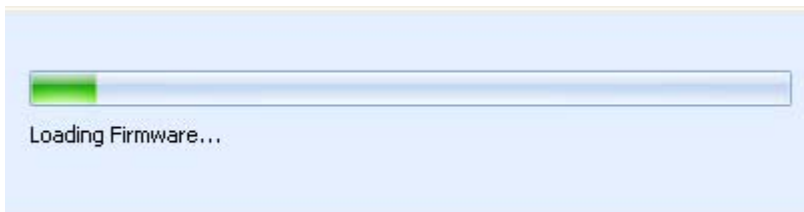


Check for the updated firmware from the Technical Support Website.  
Save the file.  
Browse to locate the .frm file.  
Click OK to start the download.



Status bar shows upgrade progress.

Printer will reboot after the completion.



## Exiting the Workbench Application

From the Application Icon select EXIT.



# Using the Utilities Applet Group

The Utilities applet group includes these applets: Card Samples, Run Tests, Printer Information, Print Spooler, Inhibit Panel Layout, Rewriteable Card Eraser, and Print Viewer.

## Using the Card Samples Applet

This applet provides a set of images that can be sent to the printer, using the current driver settings. This applet is used to test the driver settings and printer functionality outside of a customer's badge-making application.

### Opening the Card Samples Applet



## Printing a Card Sample



### Adding Text to the Card Sample

This function will add the text “sample image” to the card. (**Note:** This text will print with the Resin (K) Panel (if available) while any black elements in the image will print using the Dye Sub (YMC) Panels. This is helpful when testing printer performance with the Resin (K) Panel.)

### Adding a Barcode to the Card Sample

This function will add a sample barcode to the card image. (**Note:** This barcode will print using the Resin (K) Panel (if available) while any black elements in the image will print using the Dye Sub (YMC) Panels. This is helpful when testing printer performance with the Resin (K) Panel.)

### Printing a Two Page Card Sample

This function will print two pages of the selected image.

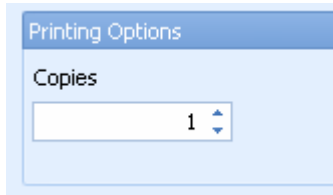
- If **Print both sides** is unselected in the Driver, the printer will print two (2) cards with full YMC or YMCK on the front of each card.

- If **Print both sides** is selected in the Driver, the image will print with YMC or YMCK on the front with YMC or YMCK on the back.
- If **Print both sides** is selected in the Driver, and **Split Ribbon Print** is selected, the image will according to a table.

Ribbon	Front	Back
YMC	YMC	YMC
YMCK	YMC	K
YMCKK	YMCK	K
YMCFKO	YMC F O	K
YMCFKOK	YMCFK O	K
YMCKH	YMCKH	YMCKH

## Printing Multiple Copies of a Card Sample

This function will allow you to print multiple copies of the same sample. This is helpful when printing samples for a trade show or to test printer reliability over multiple prints.



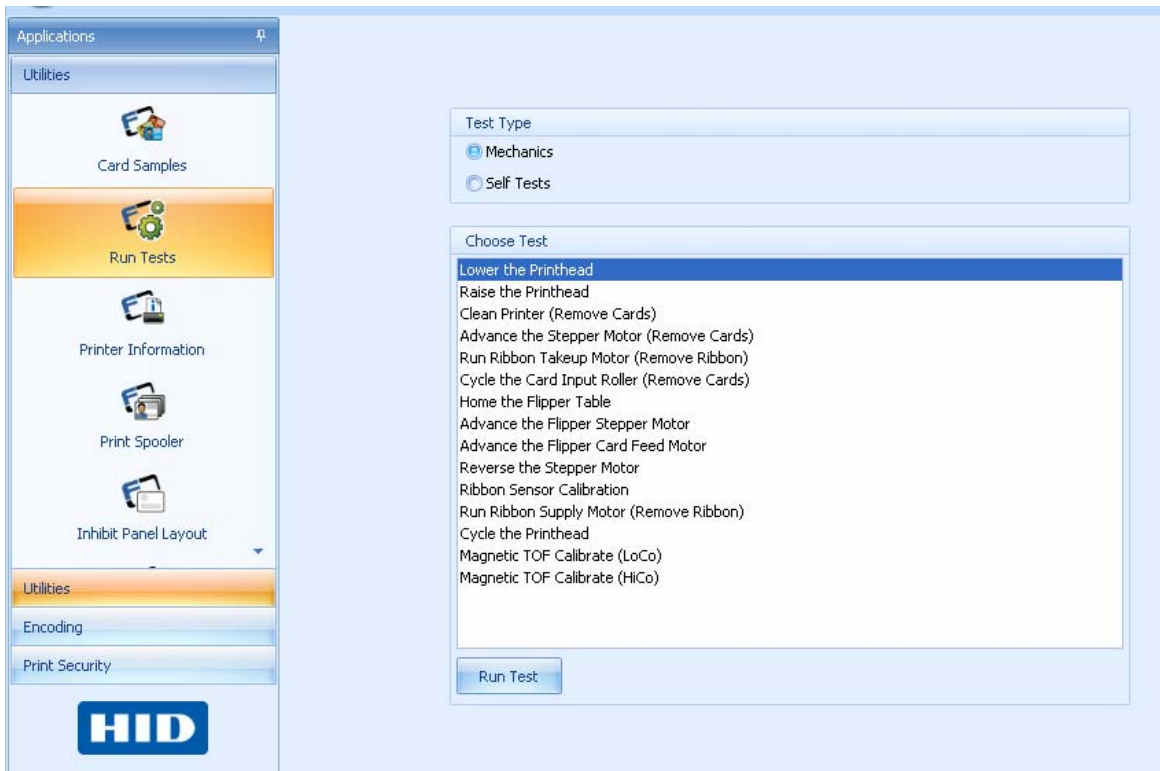
## Using the Run Tests Applet

This applet provides the ability to run utility commands resident in the Printer Firmware to exercise Motors and Sensors in the Printer. The two test types are for Mechanics and Self Tests, as shown below.

Click the **Utilities** Applet Group and select the **Run Tests** applet.

### Running a Mechanics Test

This applet will allow you to isolate printer functions and run them to determine operational status.



## Reviewing the Mechanics Test Table

Note: The test window may show different options depending on the printer selected.

Mechanics Tests	Applicable Printer	Description of Test
Advance the Flipper Card Feed Motor	DTC400E, C30e	Use this test to move the Card Feed Rollers.
Advance the Flipper Stepper Motor	DTC400E, C30e	Use this test to move the Flipper Stepper Motor.
Advance the Stepper Motor (Remove Cards)	HDP5000, DTC550, DTC400E, C30e, DTC1000, DTC4000, DTC4500	Use this test to move the Stepper Motor.
Calibrate the Film Sensors	HDP5000	Use this test to calibrate the film Sensor.
Change to Hopper 1	HDP600, DTC550	Use this test to change from Hopper 2 to Hopper 1.

Change to Hopper 2	HDP600, DTC550	Use this test to change from Hopper 1 to Hopper 2.
Clean Printer (Remove Cards)	DTC400E, C30e	Use this option for instruction on cleaning the printer.
Cycle the Card Input Roller (Remove Cards)	DTC400E, C30e	Use this test to move the Card Input Motor.
Cycle the Printhead	HDP600, DTC400E	Use this test to cycle the Printhead.
Home the Flipper Table	HDP5000, HDP600, DTC550, DTC400E, C30e, DTC1000, DTC4000, DTC4500	Use this test to level the Flipper Table.
Initialize the Transfer Film	HDP600	Use this test to move the transfer film back and forth.
Initialize the Print Ribbon	HDP600	Use this test to move the Ribbon.
Lower the Printhead	HDP5000, DTC550, DTC400E, C30e, DTC1000, DTC4000, DTC4500	Use this test to lower and raise the Printhead.
Magnetic TOF Calibrate (HiCo)	DTC400E, C30e	Use this test to calibrate the Top of Form Sensor on a Hi-Co magnetic card.
Magnetic TOF Calibrate (LoCo)	DTC400E, C30e	Use this test to calibrate the Top of Form Sensor on a Lo-Co magnetic card.
Move Flipper Table to Mag Position	HDP600, DTC550	Use this test to move the Flipper Table to the magnetic entry slot.
Raise the Printhead	HDP5000, DTC550, DTC400E, C30e, DTC1000, DTC4000, DTC4500	Use this test to raise and lower the Printhead.
Restart the Printer	HDP5000, DTC1000, DTC4000, DTC4500	Use this test to restart the printer.
Reverse the Stepper Motor	HDP5000, DTC550, DTC400E, C30e, DTC1000, DTC4000,	Use this test to test the Stepper Drive Motor in reverse.

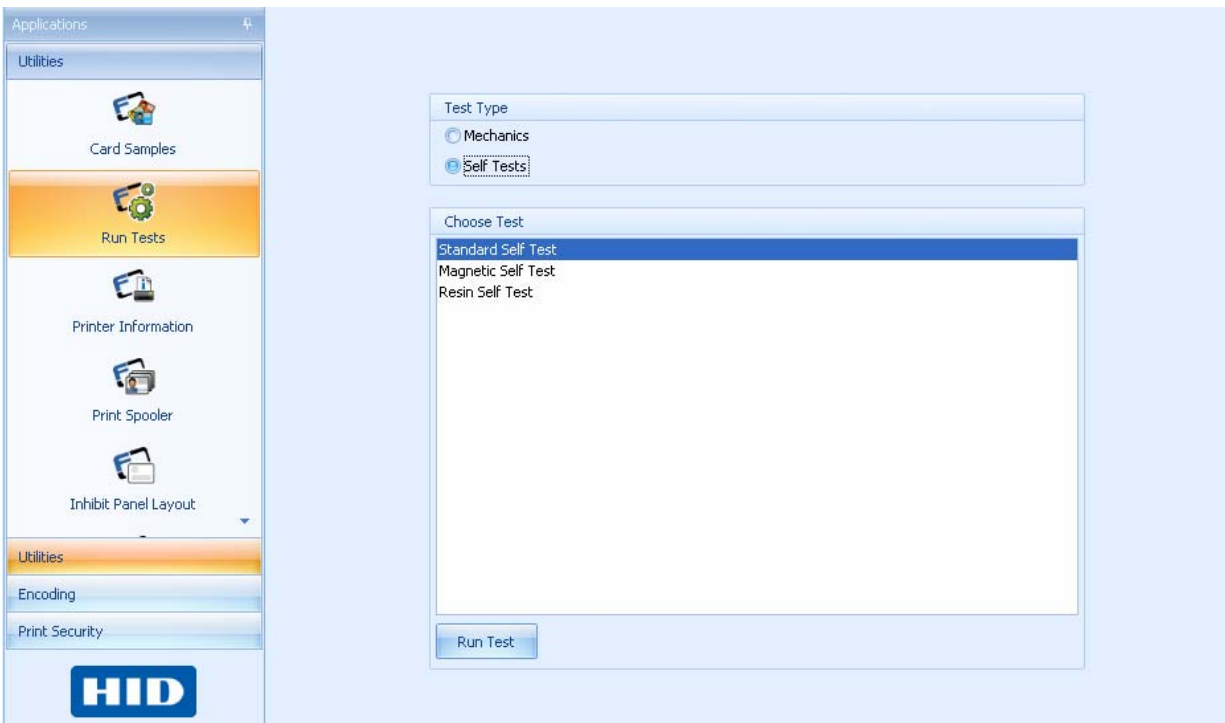


	DTC4500	
Ribbon Sensor Calibration	HDP5000, HDP600, DTC550, DTC400E, C30e, DTC1000, DTC4000, DTC4500	Use this test to calibrate the Ribbon Sensor.
Run Printhead Lift Motor	HDP5000, DTC550, DTC1000, DTC4000	Use this test to run the Printhead Lift Motor.
Run Ribbon Supply Motor (Remove Ribbon)	HDP5000, DTC550, DTC400E, C30e, DTC1000, DTC4000, DTC4500	Use this test to run the Ribbon Supply Motor.
Run Ribbon Take-up Motor (Remove Ribbon)	HDP5000, DTC550, DTC400E, C30e, DTC1000, DTC4000, DTC4500	Use this test to run the Ribbon Take-up Motor.
Toggle the Card Hopper Position	DTC550	Use this test toggle from one Hopper to the other.
Move Hopper UP	DTC1000, DTC4000, DTC4500	Use this test toggle from one Hopper to the other.
Move Hopper DOWN	DTC1000, DTC4000, DTC4500	Use this test toggle from one Hopper to the other.

# Running the Self Tests

This applet sends a command down to the printer to activate a board-based self test. This is useful in determining printer operational status.

- This list will show self tests available from the selected printer. Not all printers have the same self tests.
- These tests are based on the printer and will not take Driver settings into account.



## Reviewing the Self Test Table

Note: The test window may show different options depending on the printer selected.

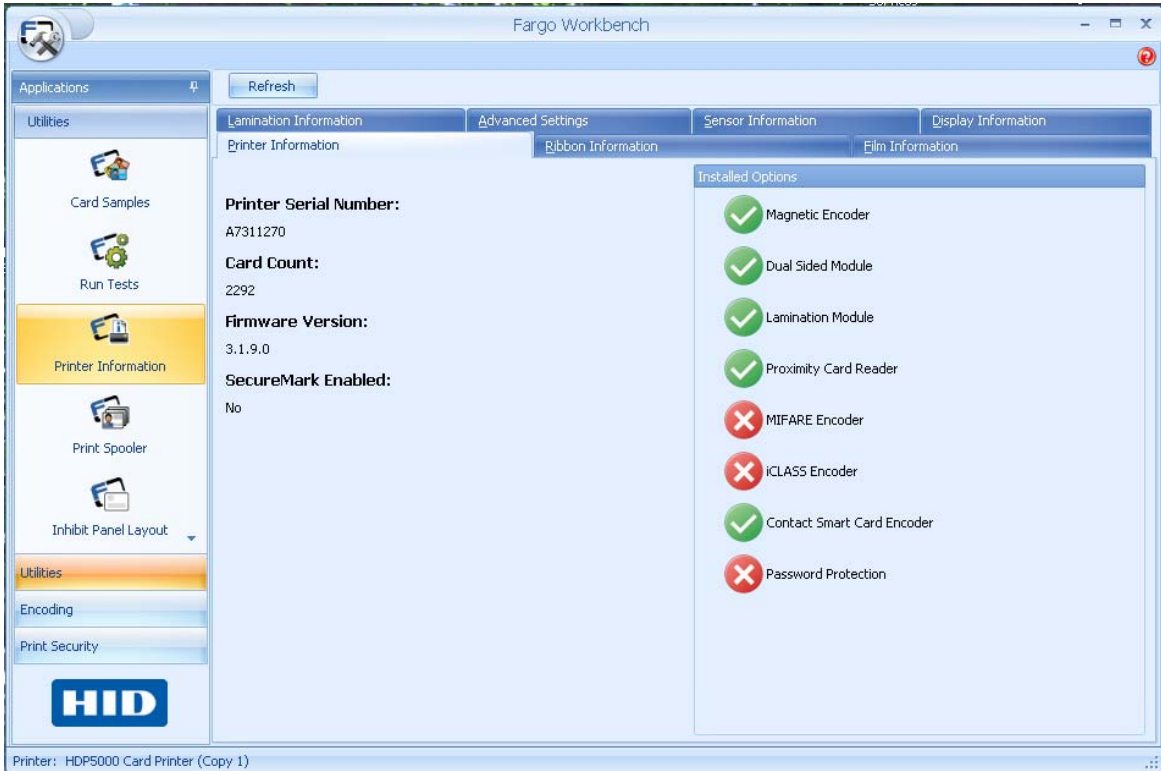
Mechanics Tests	Applicable Printer	Description of Test
Alignment Test	HDP5000, DTC550, HDP600, DTC1000, DTC4000, DTC4500	Use this test to verify image placement on the printed card
Magnetic Self Test	DTC400E, C30e, M30e, HDP5000,	Use this test to verify the magnetic encoder is working

	HDP600, DTC550, DTC1000, DTC4000, DTC4500	properly. Use a printed card with the Encoding Applet to Read the Mag Stripe.
YMCK Self Test	HDP5000, DTC550, DTC 400e, C30e, M30e, HDP600, DTC4000, DTC4500	Use this test to print a color image.
Color Bars Self Test	HDP5000, DTC550, HDP600	Use this test to print a gradient color image.
Device Settings Self Test	HDP5000, DTC550, DTC1000, DTC4000, DTC4500	Use this test to print the settings to a card.
Resin Self Test	HDP5000, DTC550, DTC 400e, C30e, M30e, DTC1000, DTC4000, DTC4500	Use this test to check the resin printing.
Gray Card	HDP5000	Use this test to print a gray card used to check intensity
Blue Card	HDP5000, DTC1000, DTC4000, DTC4500	Use this test to print a blue card to check the heat intensity of the printhead.

# Using the Printer Information Applet

The tabs in the Printer Information applet are presented in this section. This applet provides information relating to the printer capabilities and printer supplies information

- The tabs are dynamic and are shown relative to the Printers abilities.
- Select **Refresh** from the toolbar to refresh the Information.



Function	Description
Printer Serial Number	This value is stored on the printer's main board. Please note that this value will change if the printer's main board is replaced.
Card Count	Shows the number of cards printed by the printer. This value cannot be reset.
Firmware Version	This is the version of Firmware currently loaded on the printer. If necessary, the Firmware can be updated using the <b>Upgrade Firmware</b> function. See <a href="#">Upgrading the Printer Firmware</a> .

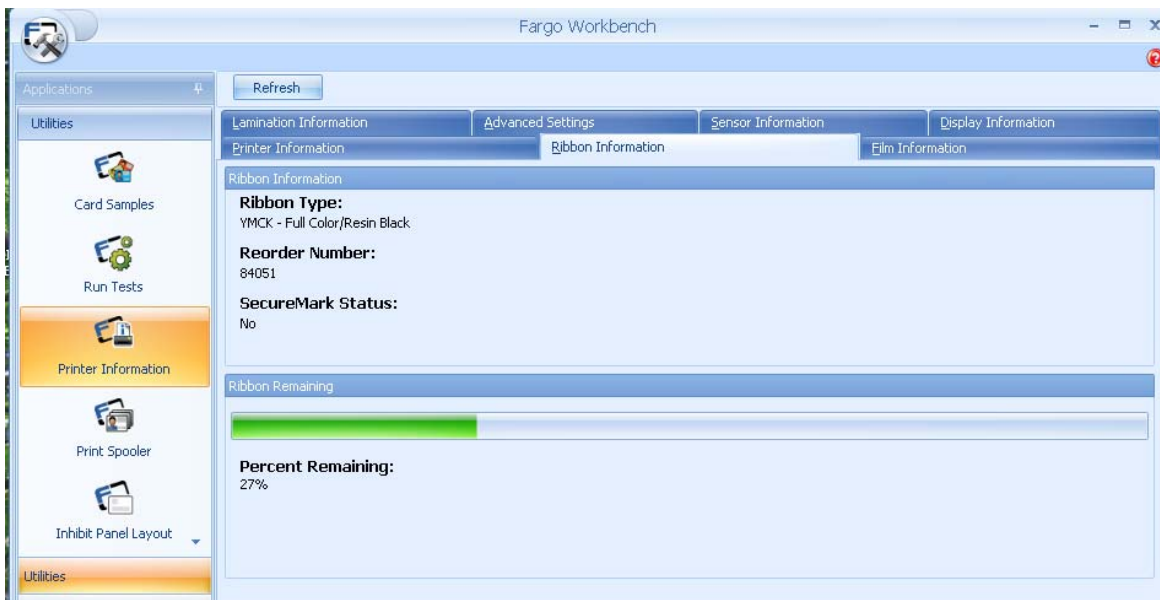
SecureMark Enabled

Indicates the printer is enabled with SecureMark, a security application that requires specially encoded ribbons.

## Reviewing the Ribbon Information Tab

This utility will retrieve the Ribbon information to the printer and indicate the type of Ribbon loaded, including:

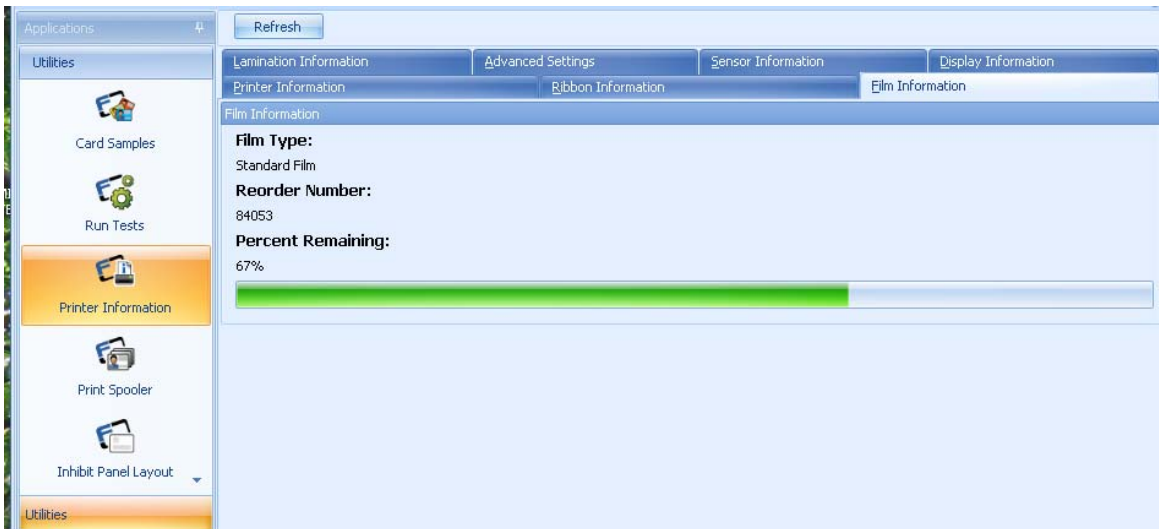
- Ribbon Type
- Reorder Number
- SecureMark status of the Ribbon
- Percent of Ribbon remaining
- These values are stored on the media and will go with the media when removed.
- To refresh this data click on the **Refresh** button



## Reviewing the Film Information Tab

This utility will retrieve the Film information to the printer and indicate the type of Film loaded, including:

- Film Type
- Reorder Number
- Percent of Film remaining
- These values are stored on the media and will go with the media when removed.
- To refresh this data click on the **Refresh** button



## Reviewing the Advanced Settings

This utility shows the current value for the printer settings. These are changed in the Advanced Settings of the printer driver preferences.

Applications Refresh

Utilities

- Card Samples
- Run Tests
- Printer Information**
- Print Spooler
- Inhibit Panel Layout

Utilities

Encoding

Print Security

**HID**

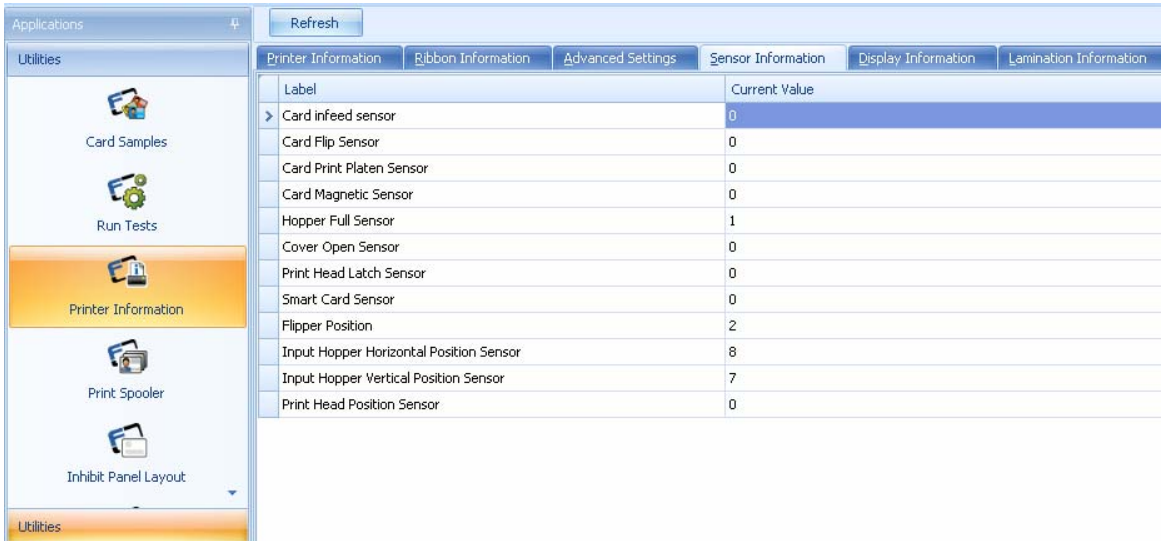
Printer Information    Ribbon Information    Film Information

Lamination Information    **Advanced Settings**    Sensor Information    Display Information

Label	Default Value	Current Value
> Image Darkness	-3	-3
Print Top of Form	-1	-1
Print Left of Form	6	6
Mag Top of Form	-37	-37
Print Flip Angle	0	0
Print Flip Level	0	0
Encoder Flip Angle	0	0
HeadResistance	3159	3159
TransferTOF	-25	-25
TransferEOF	0	0
Transfer Temp Offset	0	0
Ribbon Print Takeup Tension	0	0
Film Print Takeup Tension	0	0
Ribbon Print Supply Tension	0	0
Resin Heat Adjust	0	0
SleepTime	120	120
StandbyTime	0	0
BlushPoint	0	0
LCDContrast	0	0
Film Supply Transfer Tension	0	0
Film Takeup Transfer Tension	0	0

# Reviewing the Sensor Information

This utility shows the printer sensor status. Each printer will show specific information on the selected printer. Values may be changed by using the drop down menu on each Current Value row. Click Default to go back to factory settings.



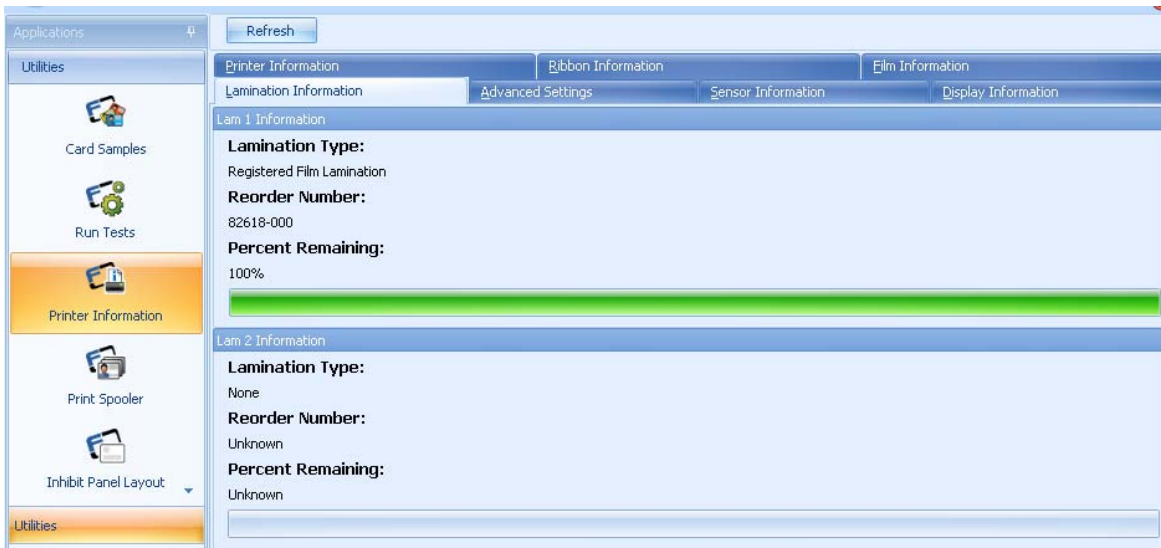
Label	Current Value
Card infeed sensor	0
Card Flip Sensor	0
Card Print Platen Sensor	0
Card Magnetic Sensor	0
Hopper Full Sensor	1
Cover Open Sensor	0
Print Head Latch Sensor	0
Smart Card Sensor	0
Flipper Position	2
Input Hopper Horizontal Position Sensor	8
Input Hopper Vertical Position Sensor	7
Print Head Position Sensor	0

# Using the Lamination Information Tab

This utility will retrieve the Lamination information to the printer and indicate the type of Laminate loaded, including:

- Lamination Type
- Reorder Number
- Percent of Laminate remaining
- These values are stored on the media and will go with the media when removed.
- To refresh this data click on the **Refresh** button



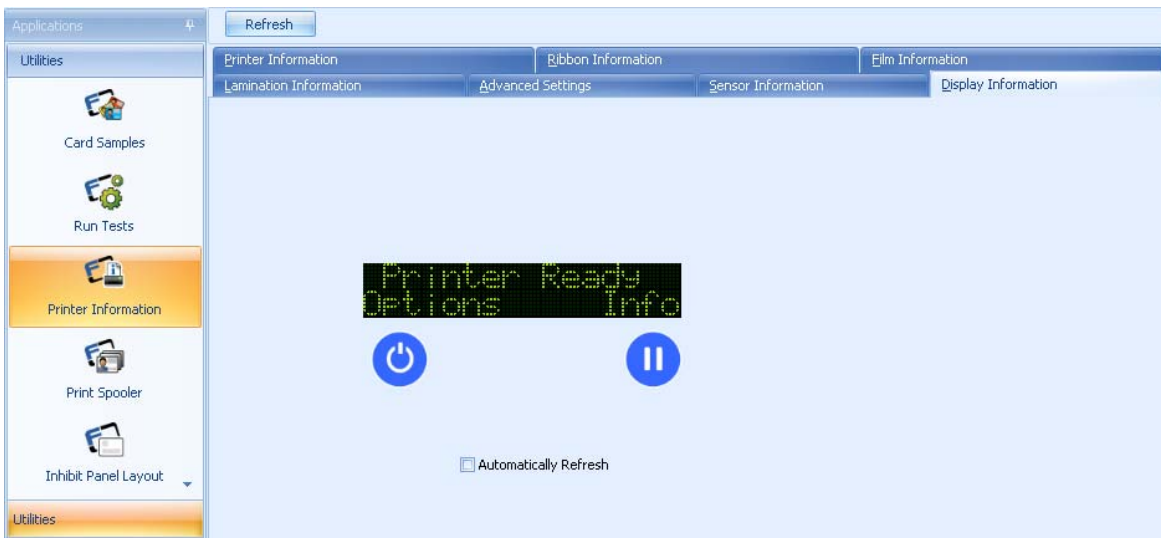


## Using the Display Information Tab

This utility will control the Printer's LCD Display functions, including:

- Viewing Printer messages on the display.
- Running the self tests from this application via the PC.
- Recovering from errors.
- Recalling printer network information.

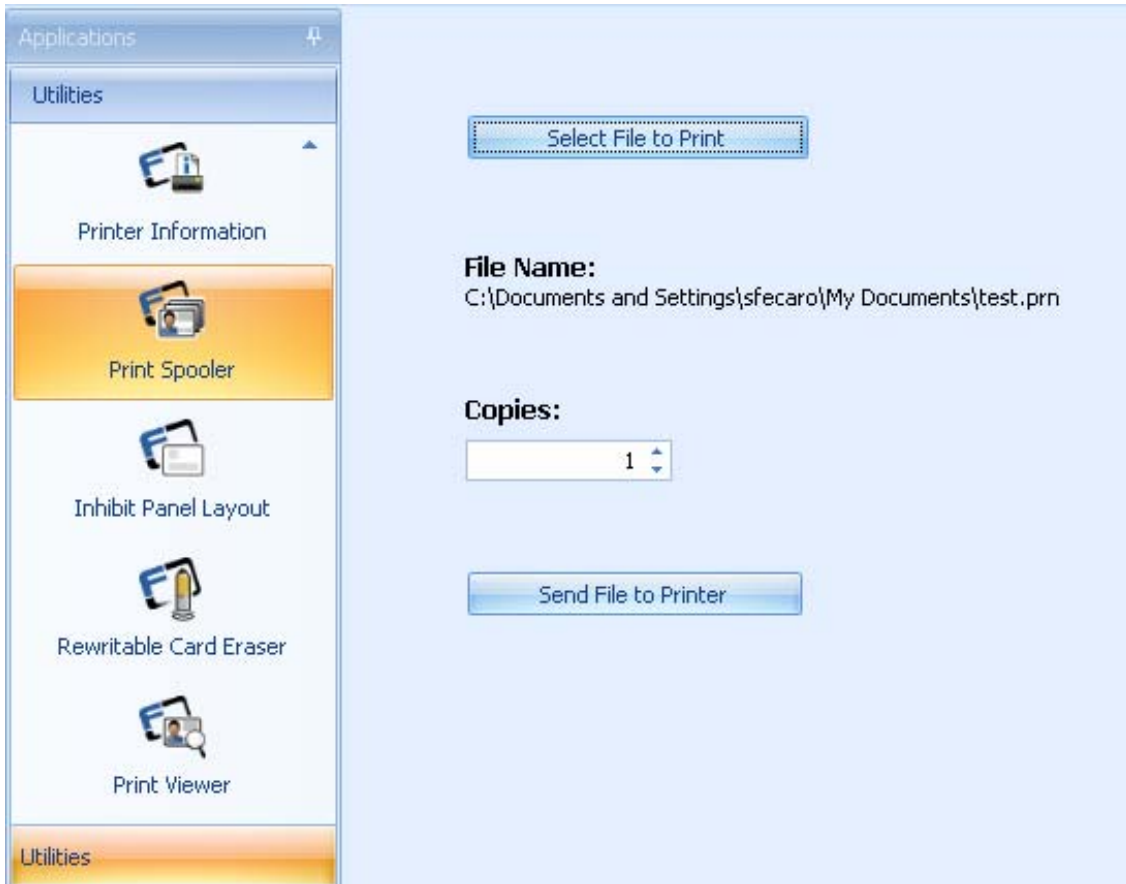
(**Note:** The LCD will cause a change to the printer. The printers will change Remote Values if **Automatically Refresh** is selected.)



# Using the Print Spooler Applet

This applet provides the ability to send Print Files (PRN's) to the printer.

- Locate and open the previously saved PRN file. The filename will appear.
- Select the number of copies to print. The range is 1-100 copies.
- Send File to Printer. Verify the Printer Driver settings are the same as the created PRN file.



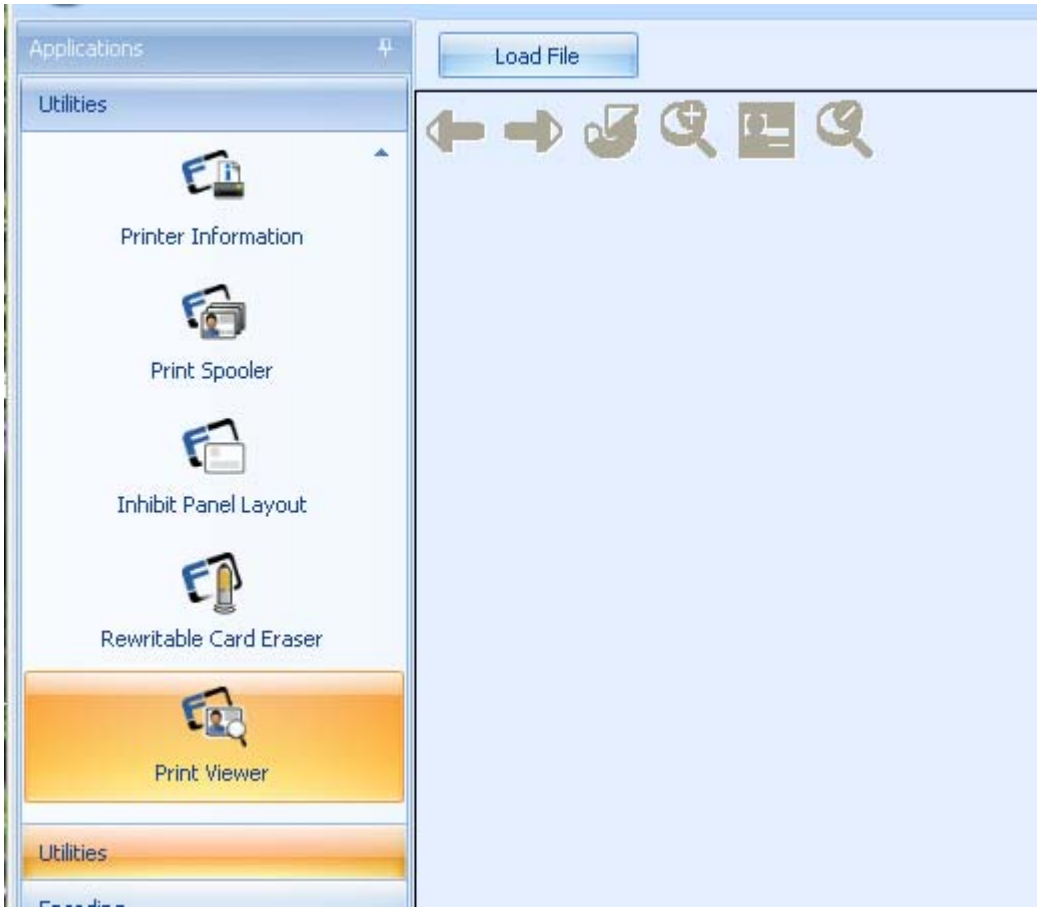
## Using the Print Viewer applet

This applet provides the ability to view a Print File (PRN) as an image.



## Reviewing the Print Viewer Toolbar

Use the icons below, as described in their respective caption.



View 2 sided files



Rotate counterclockwise



Zoom in



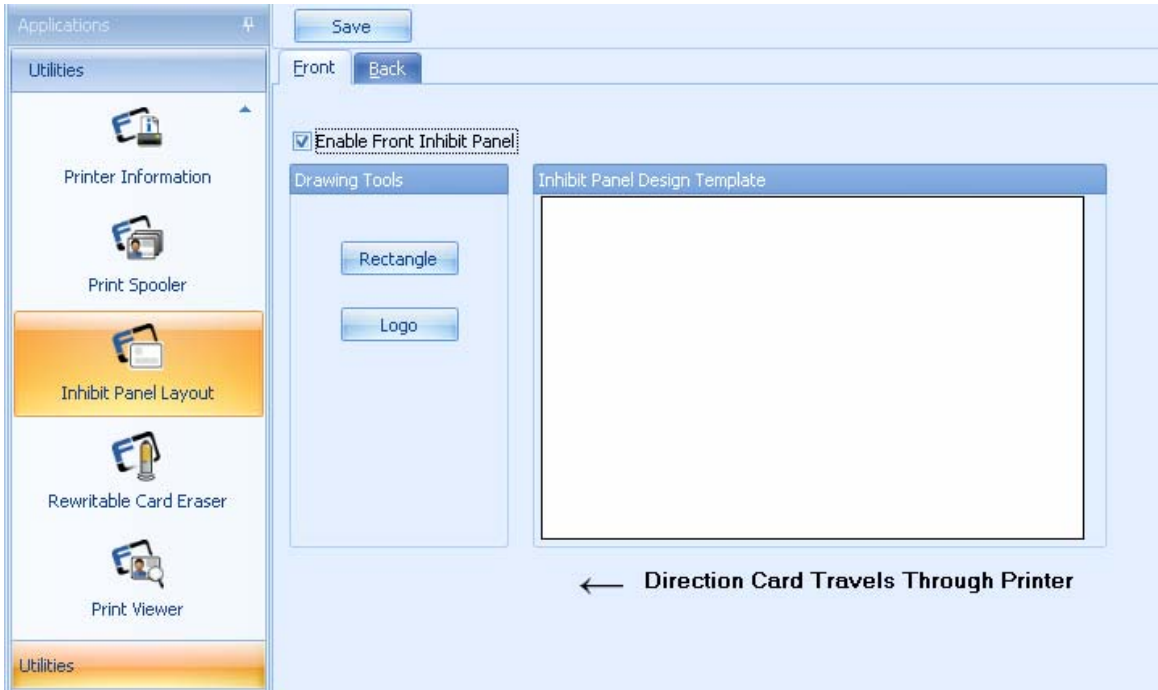
Fit in Window



Zoom Out

## Using the Inhibit Panel Layout Applet

This applet allows the user to configure the area that will NOT be printed on when using the YMCKI ribbon. This allows for the ability to write to a specific area on the card. For example: If the card already has a place for writing a signature this area.



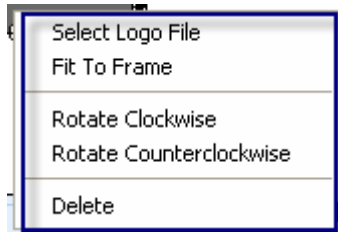
- Choose Front or Back side of the card.
- Select Enable Front or Back Inhibit Panel.
- Add a Logo or Rectangle
- Click SAVE



### Adding a Rectangle or Logo to the Card

- Click on the Rectangle or Logo box.
- Click on the template and drag to size.
- The specified area will not allow the ribbon or film to be placed in this area.
- The YMCKI ribbon must be installed and selected in the Printer Driver.

- Right click on the Rectangle box to delete the box.
- Right Click on the Logo box for options of selecting the Logo File, Fit to Frame, Rotate and Delete.

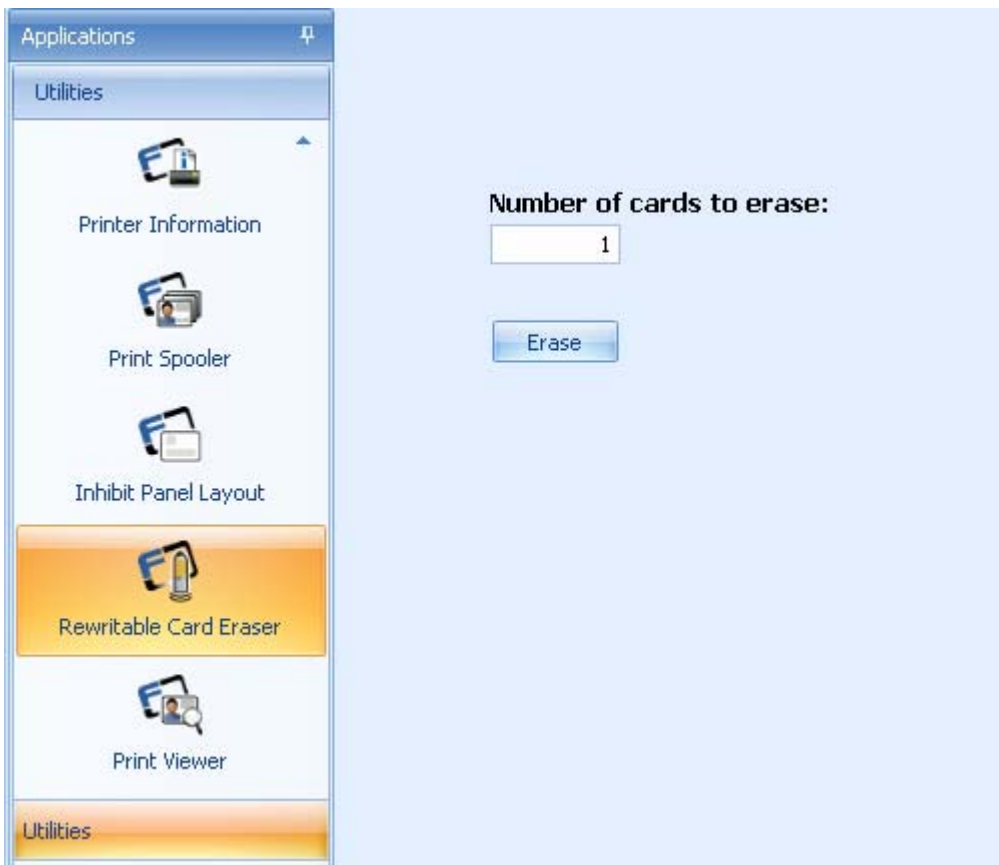


# Using the Rewritable Card Eraser Applet

This applet provides the ability to erase rewritable cards.

## Erasing a Card

1. Click Utilities.
2. Click Rewritable Card Eraser
3. Click number of cards to erase
4. Insert the cards to erase
5. Click ERASE



# Using the Encoding Applet Group

The Encoding applet group includes these applets: Magnetic Encoding, Proximity Card, Contact Smart Card, iCLASS and MIFARE.

## Using the Magnetic Encoding Applet

This applet provides the ability to exercise the Printer's magnetic encoding functionality independent of an image or application.

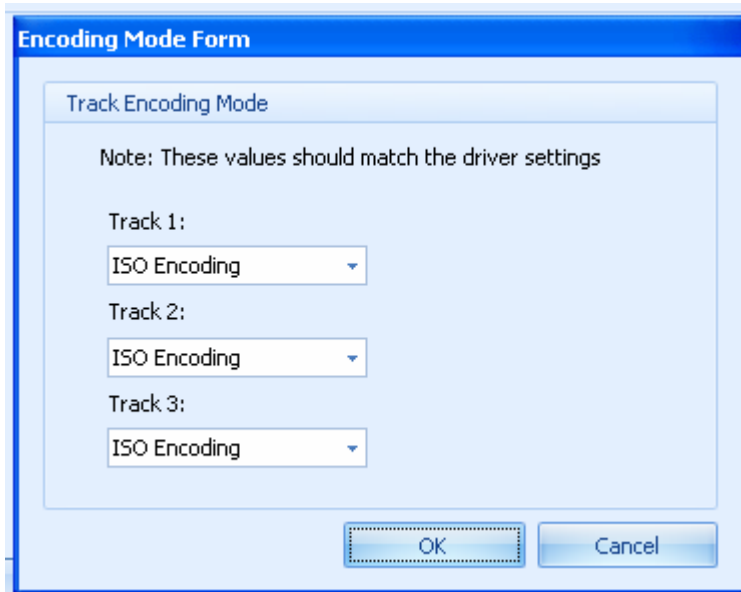




## Encoding a Magnetic Stripe (using the Sample Mag Data Option)

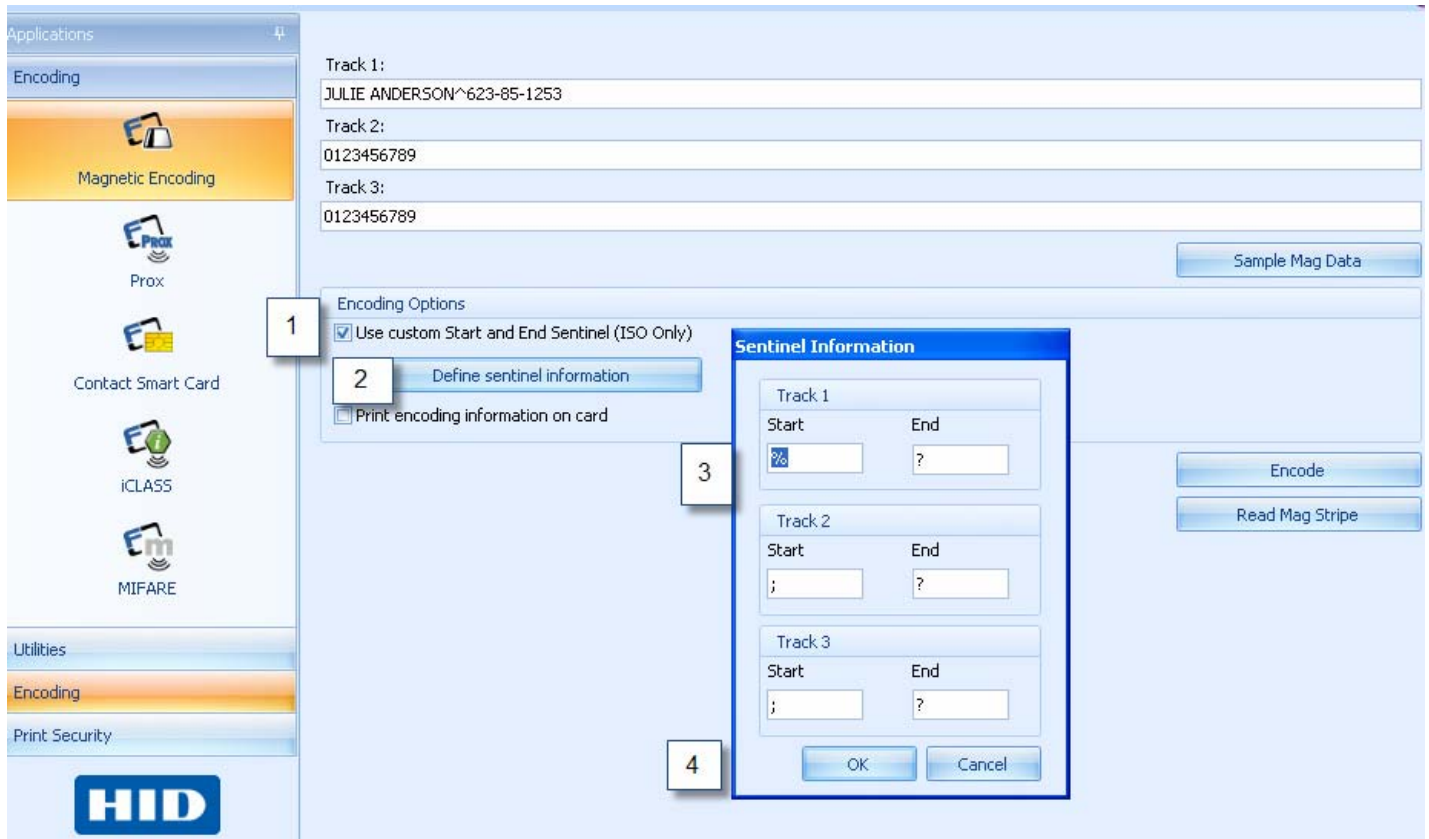


1. Click Sample Mag Data to test the magnetic encode function using generic data. Select the Mode from the drop down menu. Click OK to populate the tracks



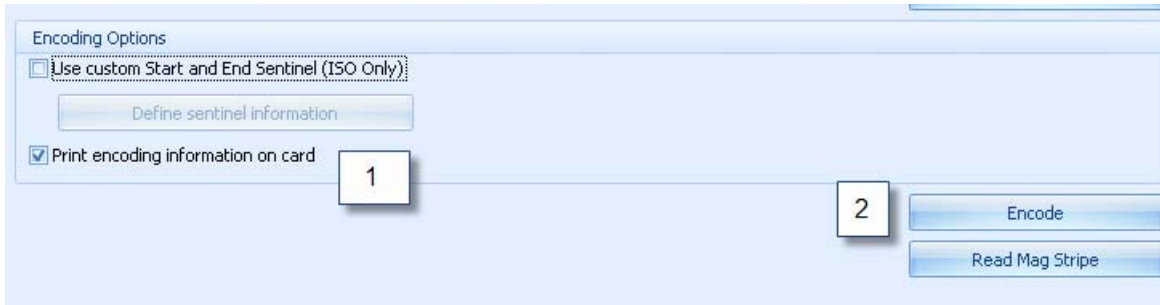
2. Click the ENCODE button to encode the tracks

## Using the Custom Start and End Sentinel (Encoding Options)



1. Select Use custom Start and End Sentinel (ISO Only)
2. Click the Define Sentinel Information box
3. Enter the custom Start and End sentinel value. No length or data limits are imposed for the data entered. Windows shows the default values.
4. Click OK to apply the changes or Cancel to discard changes.

## Printing the Encoding Information on the Card

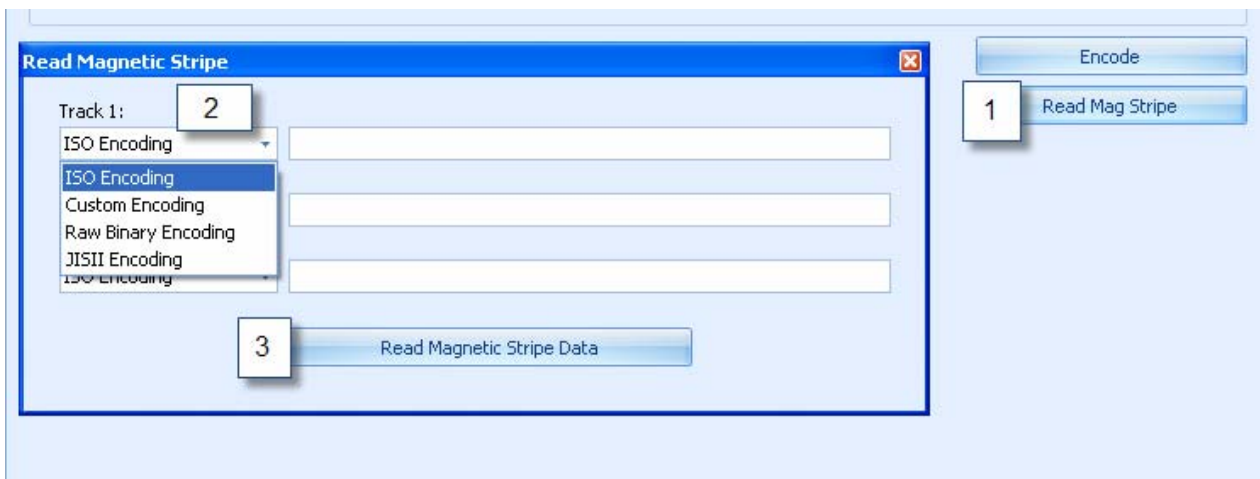


1. Select Print encoding information on card
2. Click ENCODE

## Reading the Magnetic Stripe

- Use this option to read the information encoded on any track. Select the type of encoding used.
- ISO Encoding is a formatted set of characters.
- Custom Encoding allows for configuration of custom encoding options, such as Character Size, ASCII offset, Bit Density, LRC Generation and Character Parity.
- Raw Encoding sends down a raw binary string rather than a formatted set of characters.
- JISII Encoding default Coercivity is 600oe and is used for track 2 encoding.

Note: Review the printer's user guide for more information on Magnetic Encoding standards.



1. Click Read Mag Stripe
2. Select the Type of encoding to read

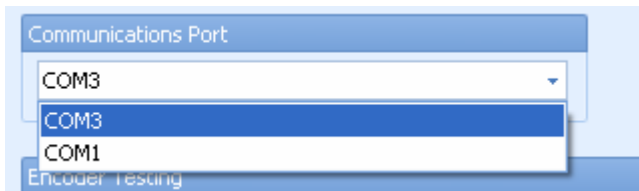
3. Click Read Magnetic Stripe Data button. Printer will draw in the card, read and display the data on the card.

## Using the Encoding Card Applets with the Port Connection

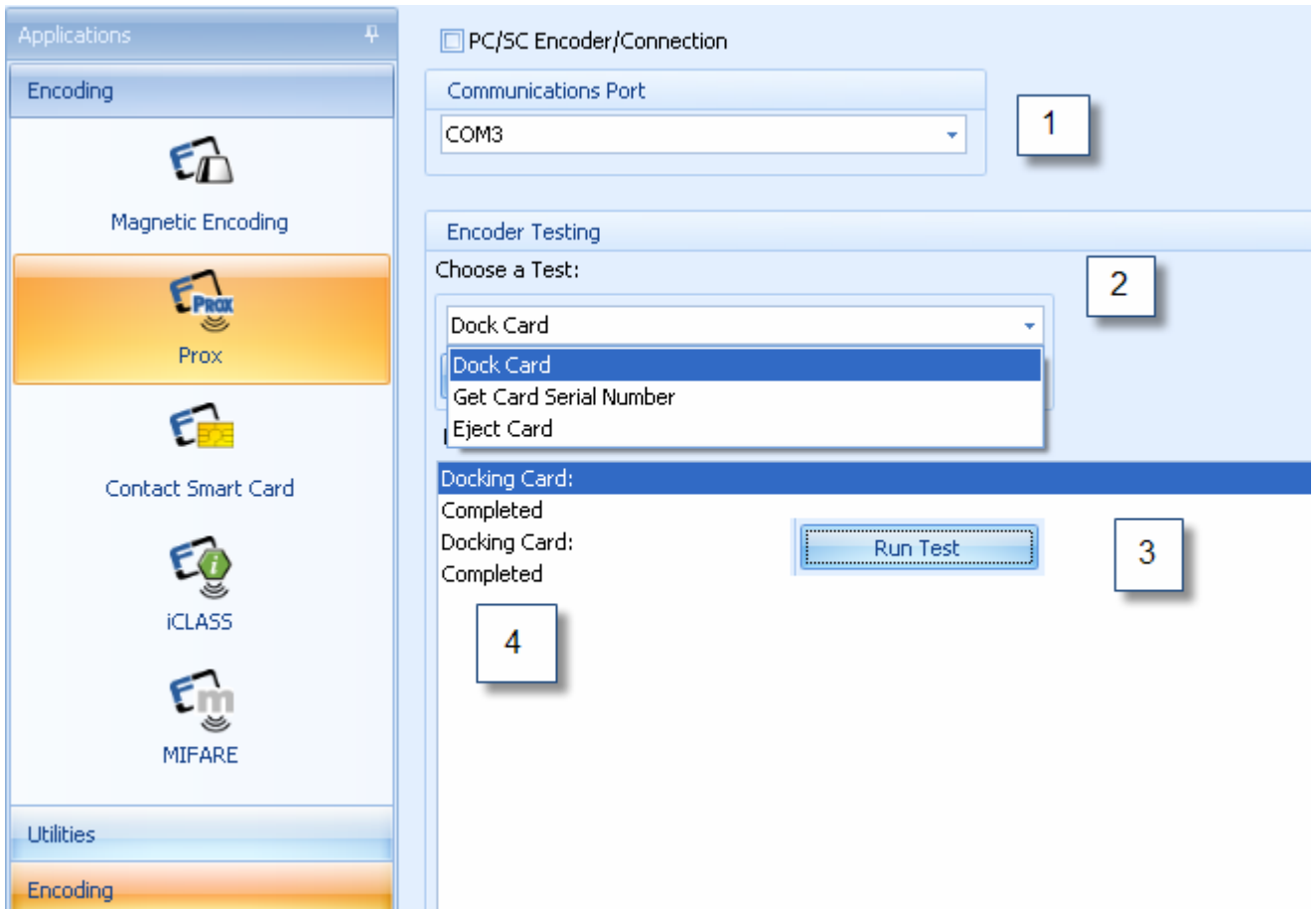
These applets provide the ability to test the Smart Card Readers in a Printer when using a serial connection. (as opposed to the PC/SC Encoder Connection).

- The iCLASS and Mifare applets have the additional option of Perform Read-Write test.
- The Mifare applet has the additional option of Get Reader Information.
- The Contact Smart Card uses the PC/SC connection only.
- Use the Fargo Test cards for this testing procedure. Each encoder comes with a test card that must be used to perform these tests.

### Choosing the Communication Port



## Docking the Card test (Prox, Mifare, iCLASS)



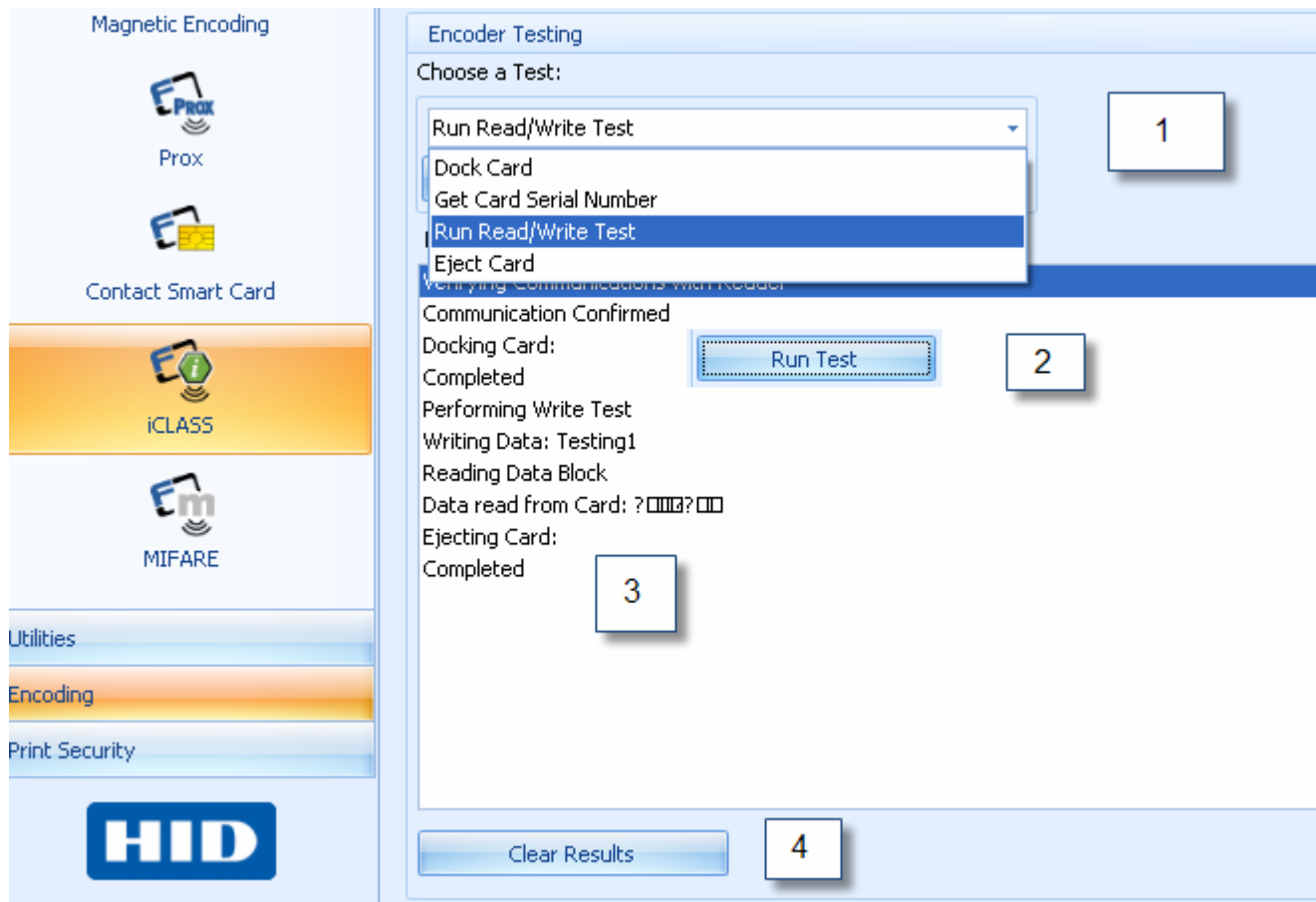
1. Select the Com Port
2. Choose a Test
3. Click Run Test
4. Results are displayed

## Getting the Card Serial Number (Prox, Mifare, iCLASS)

The screenshot shows a software window titled "Encoder Testing". At the top, it says "Choose a Test:". Below this is a dropdown menu with "Get Card Serial Number" selected. To the right of the dropdown is a box with the number "1". Below the dropdown is a "Run Test" button with a box containing the number "2". Below the "Run Test" button is a large empty rectangular area labeled "Results" with a box containing the number "3". At the bottom of the window is a "Clear Results" button with a box containing the number "4".

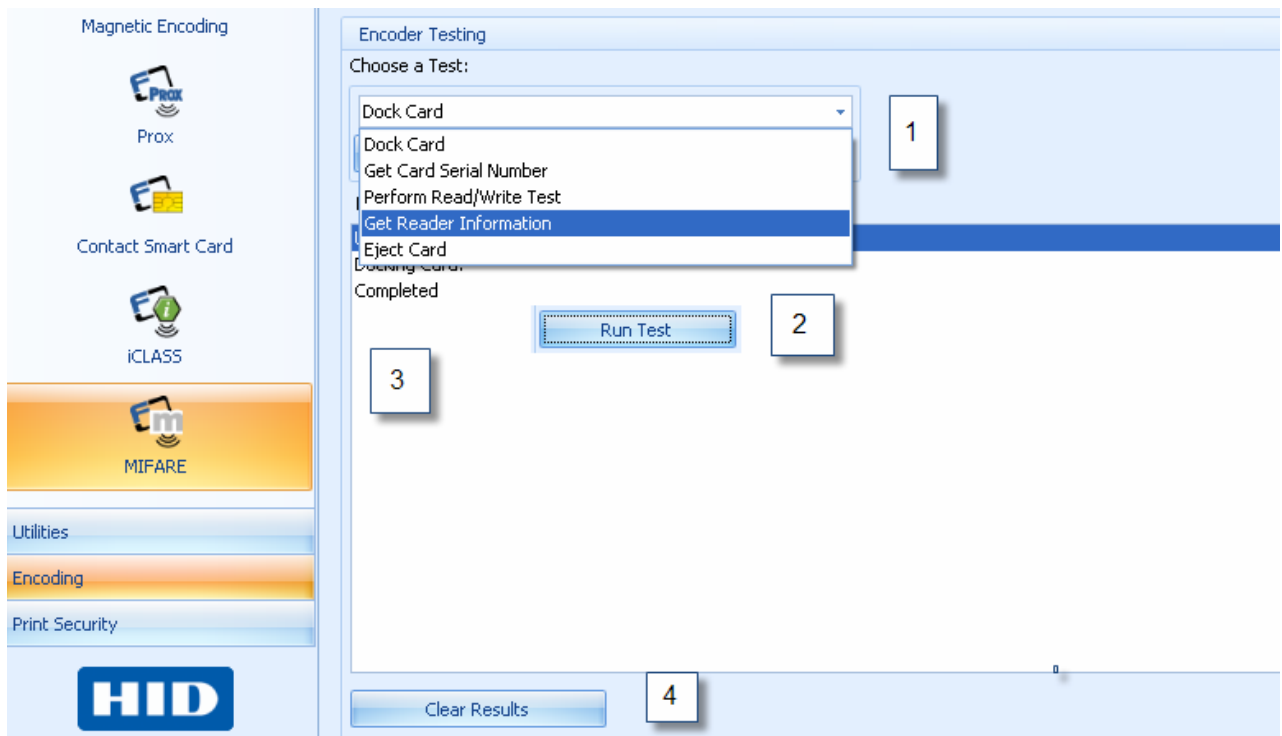
1. Select the Get Serial Number fro the drop down menu.
2. Click Run Test
3. Results are displayed
4. Clear Results

## Run Read/Write Test (iCLASS, Mifare)



1. Choose the test
2. Click Run Test
3. Results are displayed
4. Clear Results

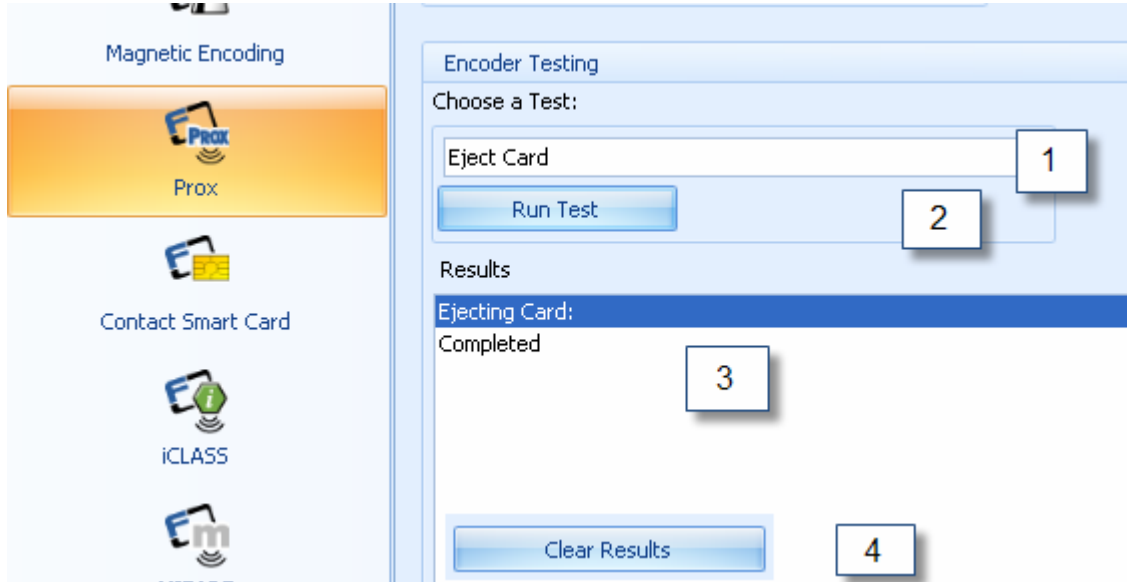
## Get Reader Information ( Mifare)



1. Choose the test
2. Click Run Test
3. Results are displayed
4. Clear Results

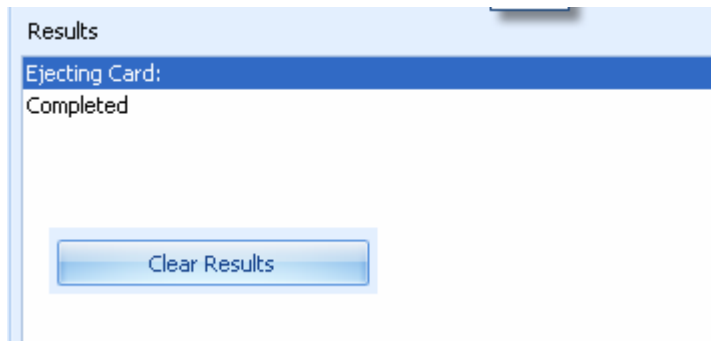


## Ejecting the Card (Prox, iCLASS, Mifare)



1. Select Eject Card
2. Click Run Test
3. Results are displayed
4. Clear Results

## Clearing the Card Test Results



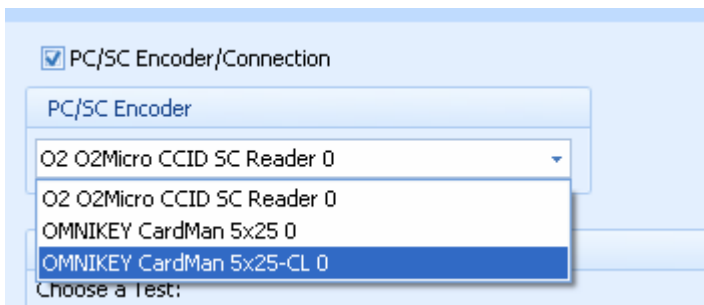
- Click Clear Results Button

# Using the Encoding Card Applet with the PC/SC Encoder Connection

This applet provides the ability to test the Card Readers in a Printer when a PC/SC Encoder Connection is selected.

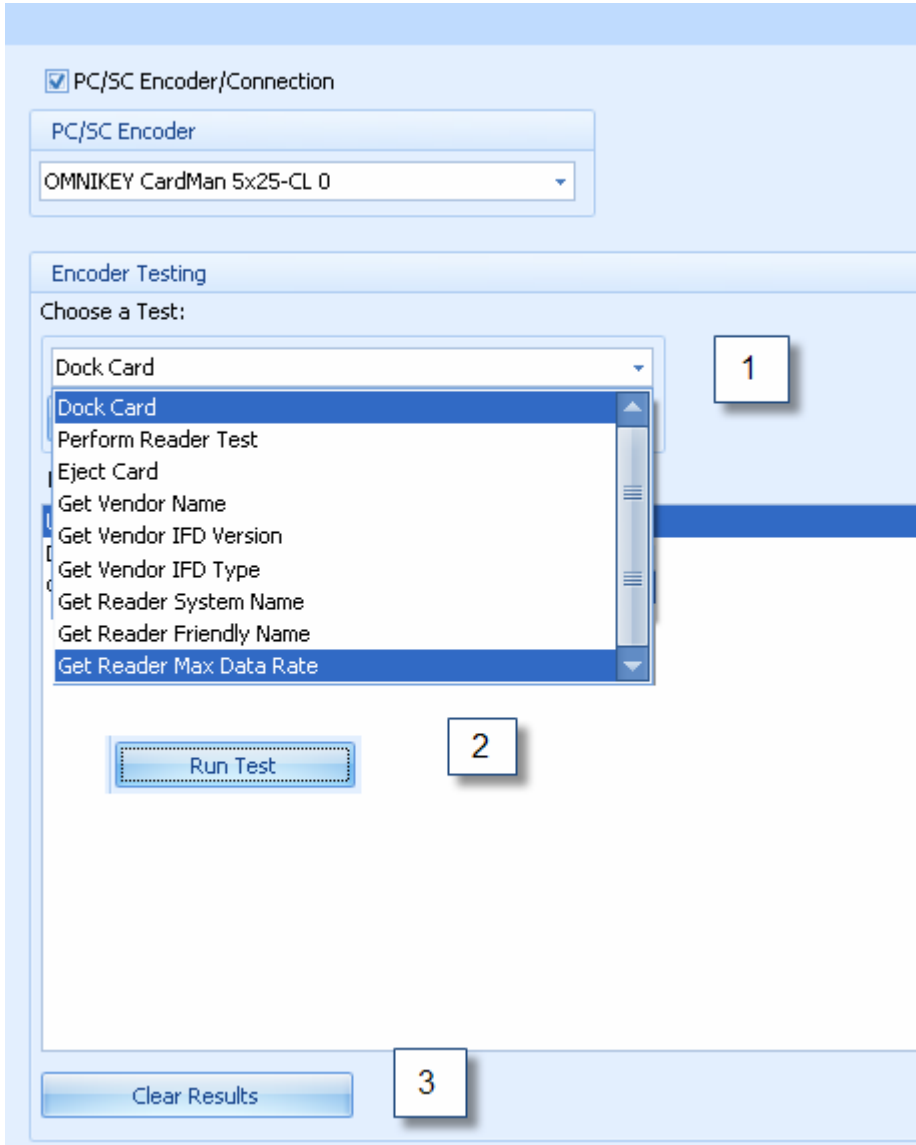
- The Prox, Contact Smart Card, iCLASS, and Mifare encoders will display the same encoder test options.
- Select Omnikey CardMan 5x2x 0 for contact smart cards
- Select Omnikey CardMan 5x2x –CL 0 for contactless smart cards ( iCLASS, Mifare, Prox)
- Test options include Dock Card, Perform Reader Test, Eject Card, Get Vendor Name, Get Vendor IFD Version, Get Vendor IFD Type, Get Reader System Name, Get Reader Friendly Name, Get Reader Max Data Rate.
- Use the Fargo Test cards for this testing procedure. Each encoder comes with a test card that must be used to perform these tests.

## Choosing the PC/SC Encoder Connection Port



Select the PC/SC Encoder installed in the printer from the drop down menu.

## Running the Encoder test for PC/SC connection



1. Choose the test
2. Click Run Test
3. Results are displayed
4. Clear Results

# Using the Print Security Applet Group

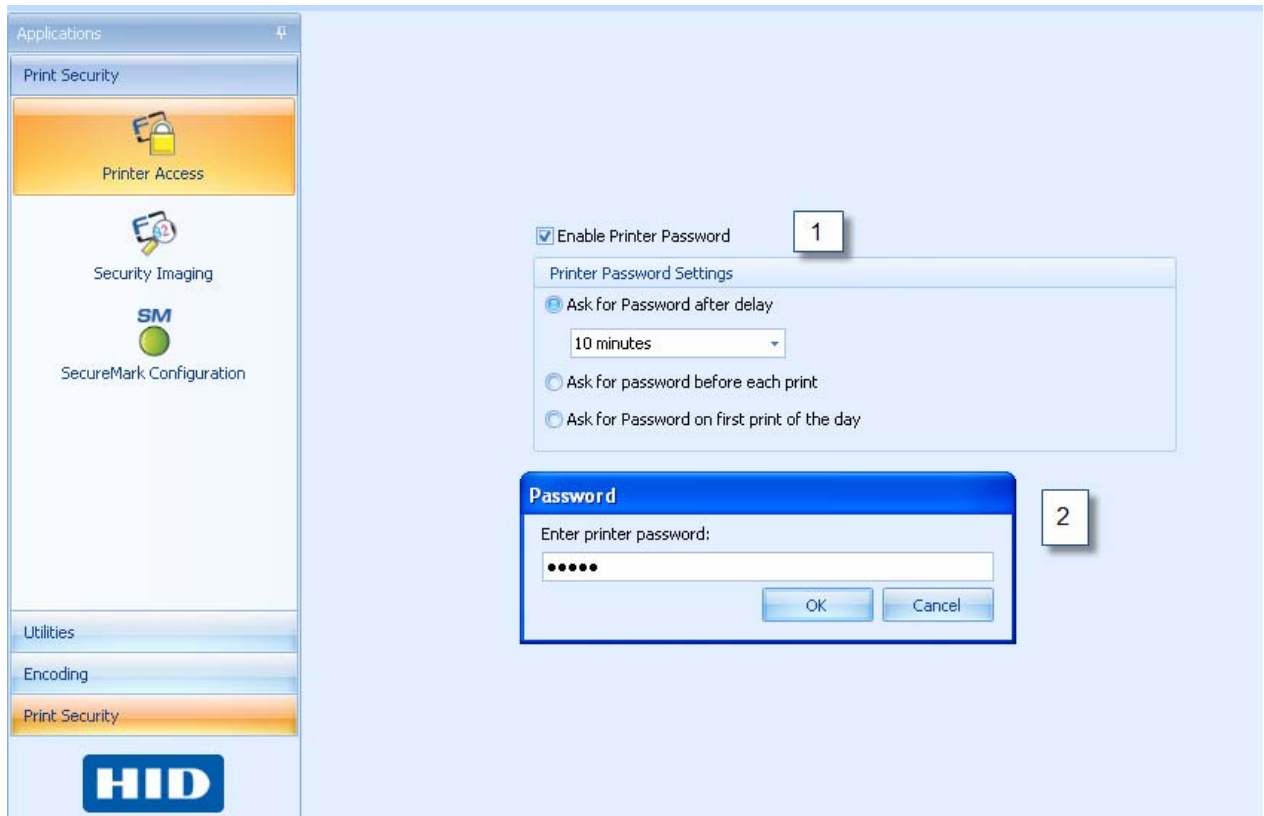
This applet group includes the Printer Access, the Security Imaging and the SecureMark Configuration applets. This section provides step-by-step procedures.

## Using the Printer Access Applet

This applet provides the ability to enable and configure the Password control feature on the printer.

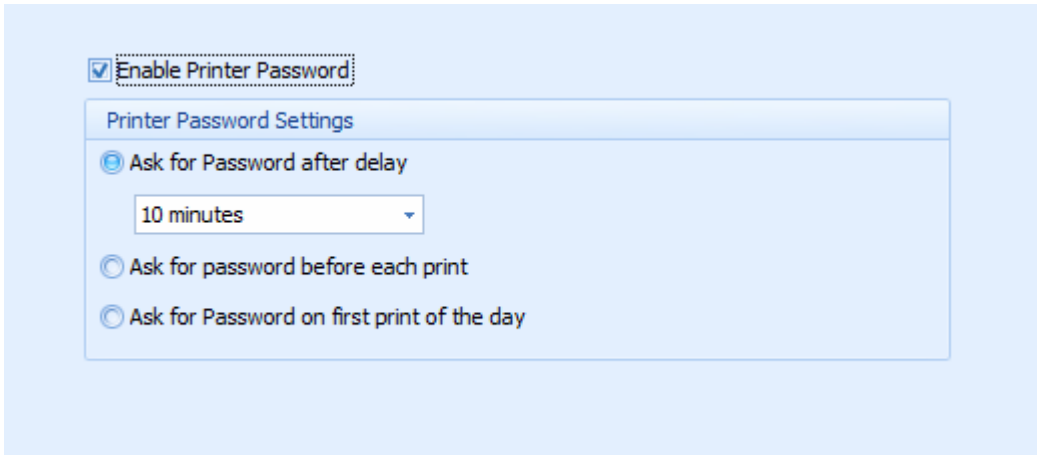
- If the Printer already has password control enabled, the checkbox will be checked.
- If password control is disabled, the checkbox will be unchecked.
- If unchecked, the Printer Password settings group box and the controls in it will be disabled.

## Enabling or Disabling Password Control on the Printer



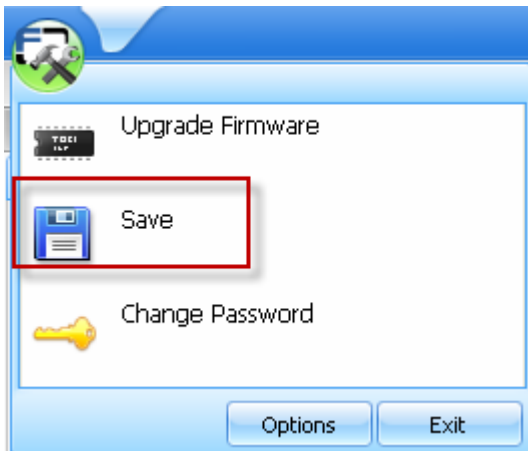
1. Select Enable Printer Password to set up the password.
2. Enter the password. ( Default Password is 00000)
3. Click OK

## Setting the Printer Password Settings



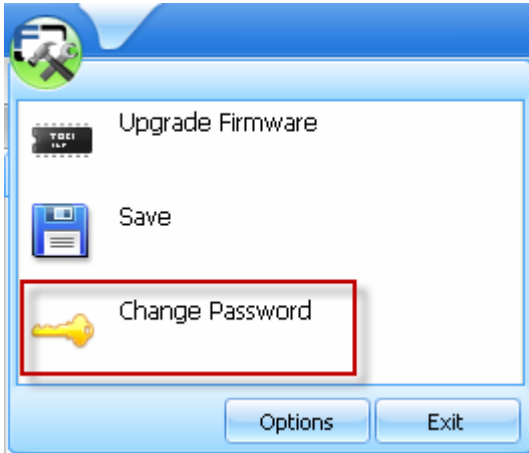
There are 3 options for the setup of how the password is configured when the enable Printer Password is selected. Otherwise these options are grayed out.

## Saving the Settings



From the Application Icon the password can be saved.

## Changing the Printer Password

A screenshot of a dialog box titled 'Change Printer Password'. The dialog box has a blue header and a white main area. It contains three text input fields: 'Current Password:', 'New Password:', and 'Confirm New Password:'. At the bottom of the dialog box, there are two buttons: 'OK' and 'Cancel'.

Enter the default password to start then enter the new password and confirm.

## Using the Security Imaging Applet

This applet allows the user to configure the data that is printed with the fluorescent panel of a YMCFKO or YMCFKOK Ribbon.

### Enabling Secure Imaging

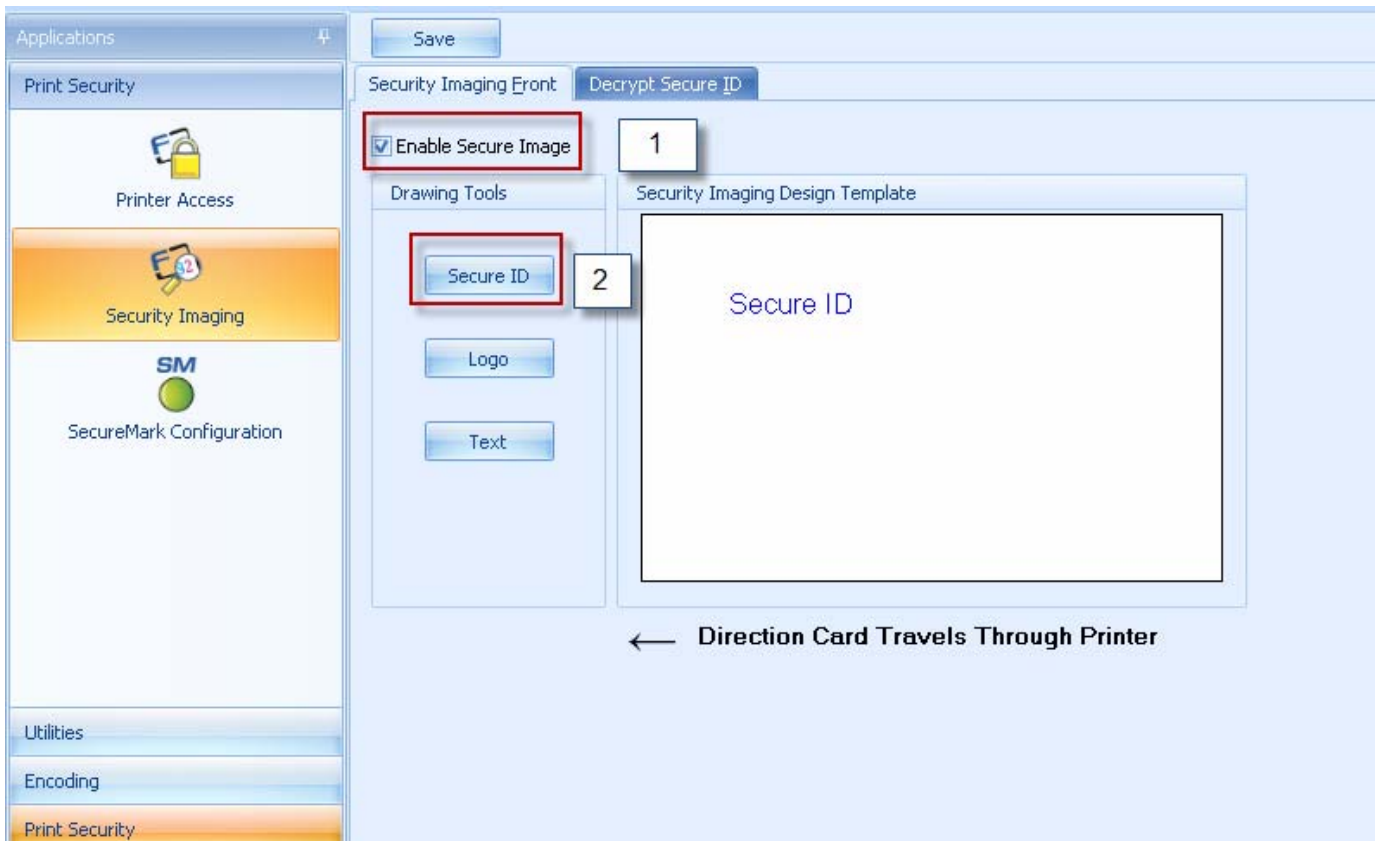
Click the **Print Security** applet group and select the **Security Imaging** applet. If the software is unable to communicate with the printer, an error is displayed.

# Configuring Fluorescent Data (F-Panel) using the Workbench

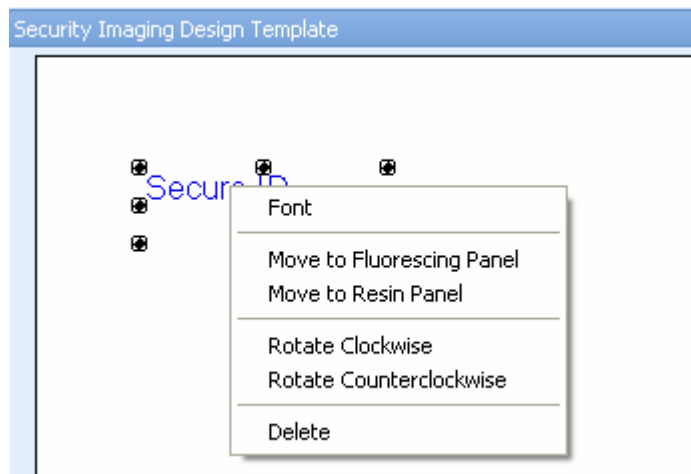
This option provides the ability to print a designated portion of the card using the Fluorescing (YMCFK) ribbon. This is used for added security of the card and may be viewed only under a UV light.

- Click the **Print Security** applet group and select the **Security Imaging Applet**



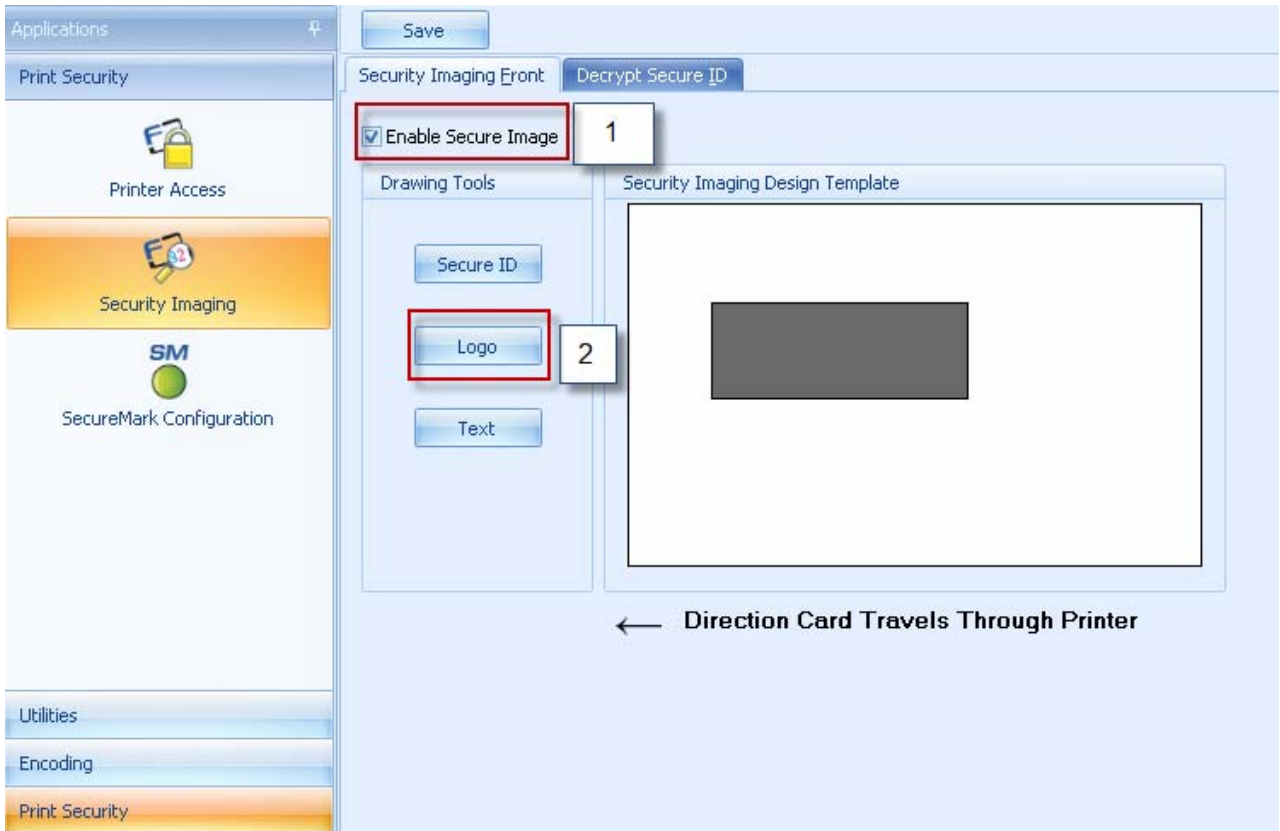


1. Check the **Enable Secure Imaging** checkbox. (**Note:** The option for both front and back are set up the same way.)
2. Click on the **Secure ID** box
3. Click and drag a box onto the Template.
4. Move and size as needed

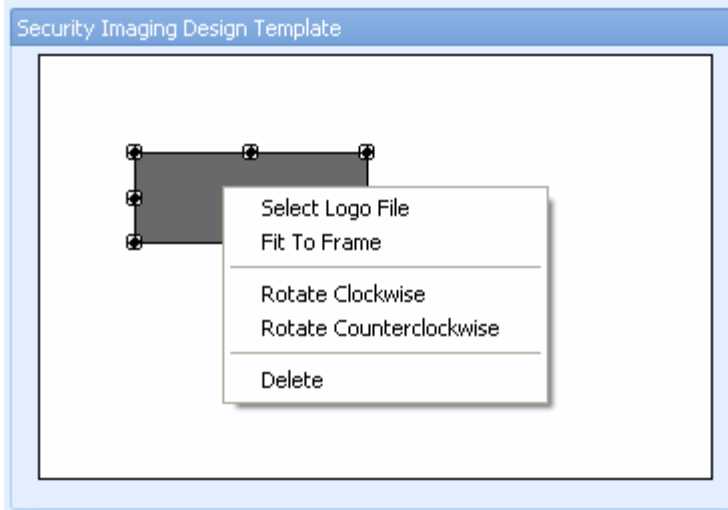




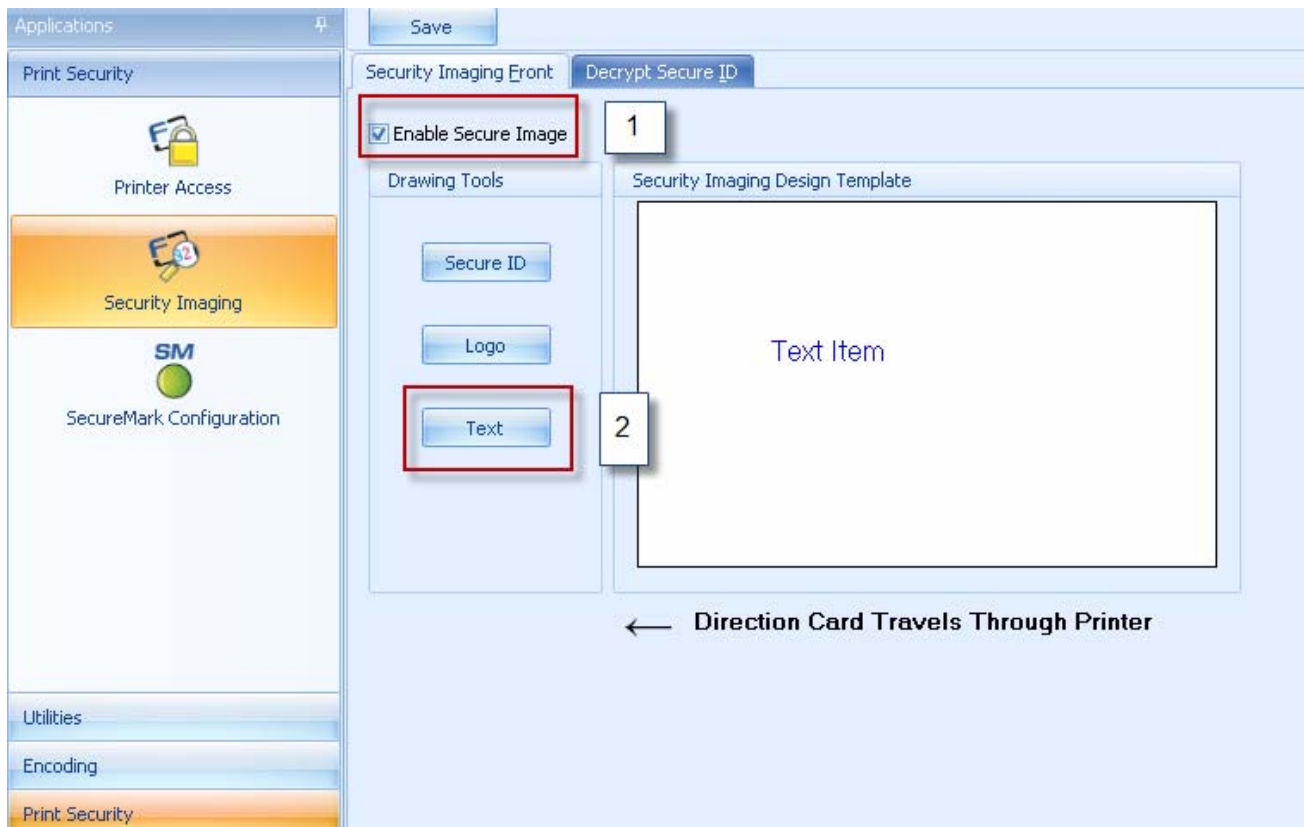
- On the Template, right click on the Secure ID box for the options.
- Select Move to Fluorescing Panel in order to print the Secure ID information with the F-Panel of the ribbon.
- Select the other options as needed.



1. Check the **Enable Secure Imaging** checkbox. (**Note:** The option for both front and back are set up the same way.)
2. Click on the **Logo** box on the left.
3. Click and drag a box onto the Template.
4. Move and size (as needed) by grabbing the corner of the box.
5. On the Template right click on the **Logo** box for the options shown below.

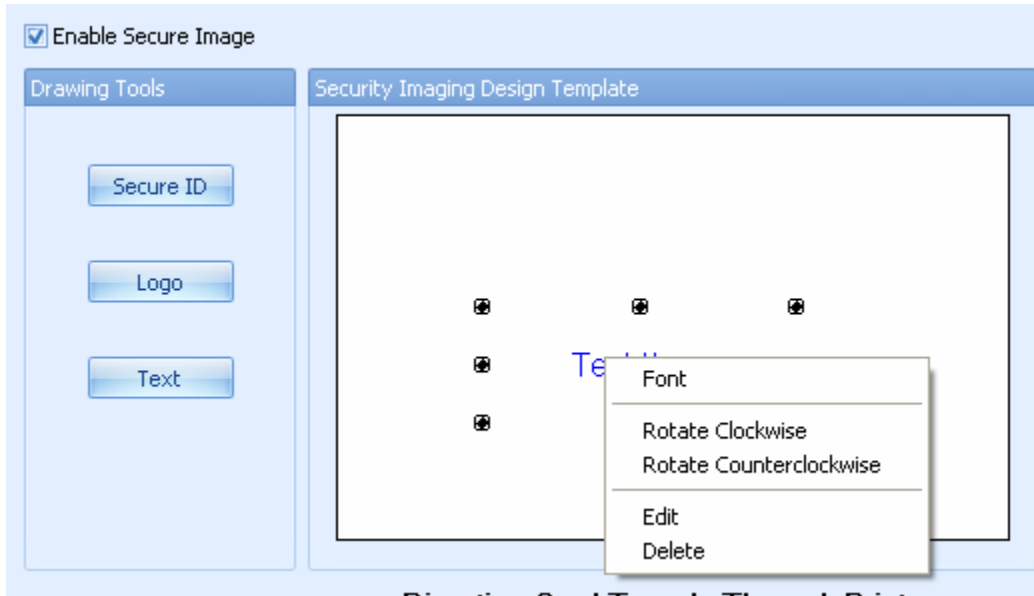


- Select Logo File.
- Find the source of the Logo to place on the card.
- (Note: Fit to Frame will size the image to fit the box. Once this is set up, this logo will print from the software program. This is set up in the background.)



1. Check the **Enable Secure Imaging** checkbox. (**Note:** The option for both front and back are set up the same way.)

2. Click on the **Text** box on the left.
3. Click and drag a box onto the Template.
4. Move and size as needed.



- On the Template, right click on the **Text** box for the options.
- Follow the same instruction as above for the back side of the card.



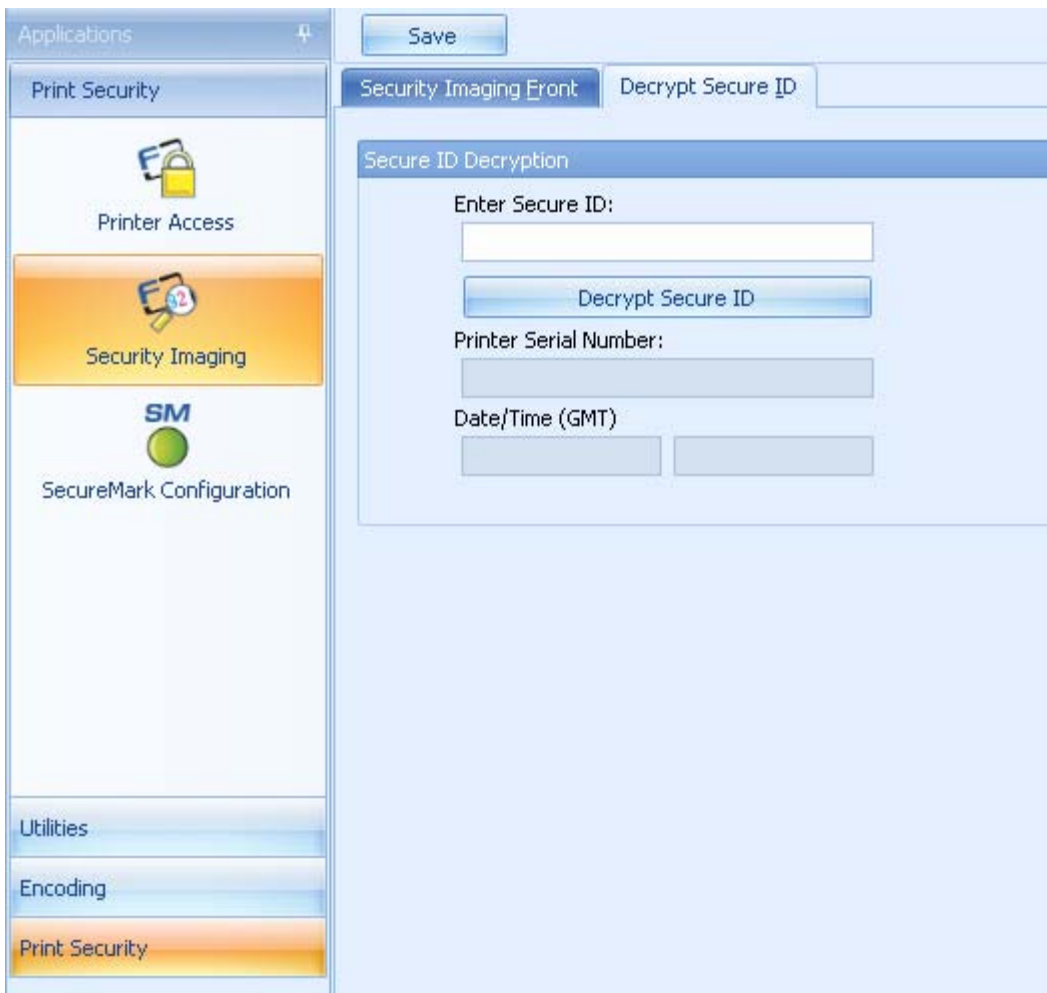
- Save this template using the **Save** button
- Close the Workbench Program
- **Note:** Any Software program file printed with the YMCFK Ribbon installed into the Printer will print this design with the F-Panel of the Ribbon.
- It will print the same file each time unless you recreate a new template.
- To clear the YKCFK printing option delete the items off of the template and hit SAVE.

## Decrypting a Secure ID

This applet describes how to decrypt the printer serial number.

Click the **Print Security** applet group. Click the **Security Imaging** applet.

- Locate the Secure ID number from the card.
- Enter this number into the Enter Secure ID box.  
**NOTE:** The Secure ID number is printed with the Resin panel of the Fluorescing Panel.
- Click Decrypt Secure ID Box  
**NOTE:** The description will show the printer serial number on which the card was printed. When the card was printed is shown in the Date/Time (GMT) box.



The screenshot displays the Fargo Workbench Utility interface. On the left is a vertical navigation pane with a header 'Applications' and a plus sign. It contains three main sections: 'Print Security' with a lock icon and 'Printer Access' label; 'Security Imaging' with a magnifying glass icon and '2' in a circle, which is highlighted in orange; and 'SecureMark Configuration' with an 'SM' logo and a green circle icon. Below these are 'Utilities', 'Encoding', and 'Print Security' (highlighted in orange). The main content area has a 'Save' button at the top left. Below it are two tabs: 'Security Imaging Front' and 'Decrypt Secure ID', with the latter selected. The 'Decrypt Secure ID' tab contains a 'Secure ID Decryption' section with the following fields and controls: 'Enter Secure ID:' with a text input box; a 'Decrypt Secure ID' button; 'Printer Serial Number:' with a text input box; and 'Date/Time (GMT)' with two separate text input boxes.

# Using the SecureMark Configuration Applet

This applet describes how to enable SecureMark on your Printer.

- Click the **Print Security** applet group.
- Click the **SecureMark Configuration** applet.
- Click Enable SecureMark.
- **Note:** Once SecureMark is enabled factory assistance is required to disable this feature on your printer.
- Click YES to enable SecureMark on your printer. Be sure to load the SecureMark Ribbon into the printer.
- Click NO to close this applet.

